

# Dell™ PowerConnect™ 3024 Systems User's Guide

[Caution: Safety Instructions](#)

[Introduction](#)

[Installation](#)

[Web Interface](#)

[Console Interface](#)

[Software Upgrades](#)

[Appendix](#)

---

## Notes, Notices, and Cautions



**NOTE:** A NOTE indicates important information that helps you make better use of your computer.



**NOTICE:** A NOTICE indicates either potential damage to hardware or loss of data and tells you how to avoid the problem.



**CAUTION:** A CAUTION indicates a potential for property damage, personal injury, or death.

---

Information in this document is subject to change without notice.  
© 2002–2003 Dell Computer Corporation. All rights reserved.

Reproduction in any manner whatsoever without the written permission of Dell Computer Corporation is strictly forbidden.

Trademarks used in this text: *Dell*, the *DELL* logo, *PowerConnect*, *Dimension*, *Inspiron*, *OptiPlex*, *Latitude*, *Dell Precision*, and *DellNet* are trademarks of Dell Computer Corporation; *Microsoft* and *Windows* are registered trademarks of Microsoft Corporation.

Other trademarks and trade names may be used in this document to refer to either the entities claiming the marks and names or their products. Dell Computer Corporation disclaims any proprietary interest in trademarks and trade names other than its own.

January 2003 P/N 13052 Rev. A04

---

# Introduction

## Dell™ PowerConnect™ 3024 Systems User's Guide

- [Features](#)
  - [Front Panel Indicators](#)
  - [Rear Panel Descriptions](#)
  - [Management](#)
- 

## Features

The PowerConnect 3024 Fast Ethernet Managed Switch offers the following features:

- 1 IP Assignment Mode
- 1 SNMP Host Authorization Table
- 1 User Authentication Mode — RADIUS Server IP Address, RADIUS Shared Secret, IP Filtering, and Allowed IP Addresses
- 1 Layer 3 Priority — DiffServ
- 1 Configuration File Management
- 1 Enhanced Security Administration
- 1 More Statistics/Utilization Summary
- 1 24 10/100BASE-T auto-sensing Fast Ethernet switching ports
- 1 2 10/100/1000BASE-T auto-sensing Gigabit Ethernet switching ports, each with a matching gigabit interface converter (GBIC) slot
- 1 2 gigabit stacking ports for daisy-chain stacking of up to 6 units
- 1 IEEE 802.3u, IEEE 802.3z, and IEEE 802.3ab compliant
- 1 Up to 8K-entry, media access control (MAC) address cache with hardware-assisted aging
- 1 IEEE 802.3x flow control for full duplex operation
- 1 IEEE 802.1Q based tagged VLAN
- 1 IEEE 802.1p class of service (CoS) through dual priority queues for each port
- 1 IEEE 802.3ad link aggregation: up to 4 aggregated trunks per switch
- 1 Spanning tree protocol
- 1 Internet group management protocol (IGMP) snooping support
- 1 Back pressure flow control for half-duplex operation
- 1 Port mirroring
- 1 Auto MDI/MDIX support for the 10/100BASE-T and the 10/100/1000BASE-T ports
- 1 MAC addresses lookup based on port, virtual local area network (VLAN) ID, and MAC addresses
- 1 System LED and per port LEDs
- 1 Standard 1U chassis
- 1 19-inch rack-mountable
- 1 3024/3024 mixed stack supported

## Management Features

- 1 Web-based management with embedded HTTP server
  - 1 Text-based management through 3 in-band Telnet sessions, and an out-of-band RS232 console port (VT100)
  - 1 Simple network management protocol (SNMP)-based network management via an SNMP management console application
  - 1 Network boot and software upload via TFTP
  - 1 Hardware assisted remote monitoring (RMON) statistic collection
  - 1 Management information base (MIB) II (RFC1213)
  - 1 Ethernet Interface MIB (RFC1643)
  - 1 Bridge MIB (RFC1493)
  - 1 4-Group RMON (RFC1757)
-

## Front Panel Indicators

The front panel of the system contains the console port, all of the Ethernet ports, and the LEDs. As shown in the figure below, there are one system LED, two LEDs for each Fast Ethernet port, and three LEDs for each Gigabit Ethernet port on the switch. The following sections describe the front panel in more detail.



### Power LED

The power LED shows the general operating status of the system as reflected by the following indicators:

- 1 Off — The unit is off.
- 1 Green — The unit is on and ready for operation.
- 1 Yellow — The unit is in boot mode.
- 1 Blinking Yellow — The unit fails during initialization.

The normal sequence after power-on or system reset is Green (initialization success), Yellow (booting applications), and Green again (system ready).

### Console Port

The console interface can be accessed from the RS232 serial port or a telnet connection. The console port uses a standard null-modem cable. For instructions on configuring your switch using the console, see "[Console Interface](#)."

### Port LEDs

Two LEDs show the operating status of each Fast Ethernet port and three LEDs show the operating status of each Gigabit Ethernet port as reflected by the indicators in each of the following sections:

#### Fast Ethernet Ports

##### Link Status and Activity (LINK/ACT)

- 1 Green — A 100-Mbps link is up and there is no activity.
- 1 Blinking Green — A 100-Mbps link is up and there is activity.
- 1 Yellow — A 10-Mbps link is up and there is no activity.
- 1 Blinking Yellow — A 10-Mbps link is up and there is activity.
- 1 Off — The link is down.

##### Duplex Mode and Collisions (FULL/COL)

- 1 Green — A full-duplex link is up.
- 1 Yellow — A half-duplex link is up and no collisions are occurring.
- 1 Blinking Yellow — A half-duplex link is up and collisions are occurring.
- 1 Off — The link is down.

#### Gigabit Ethernet Ports

##### Gigabit Link Status and Activity (GIGA)

- 1 Green — A 1000-Mbps link is up and there is no activity.
- 1 Blinking Green — A 1000-Mbps link is up and there is activity.
- 1 Off — A 10/100-Mbps link is up or the link is down.

##### 10/100-Mbps Link Status and Activity (LINK/ACT)

- 1 Green — A 100-Mbps link is up and there is no activity.
- 1 Blinking Green — A 100-Mbps link is up and there is activity.
- 1 Yellow — A 10-Mbps link is up and there is no activity.
- 1 Blinking Yellow — A 10-Mbps link is up and there is activity.
- 1 Off — The link is down.

##### Duplex Mode and Collisions (FULL/COL)

- 1 Green — A full-duplex link is up.
- 1 Yellow — A half-duplex link is up and no collisions are occurring.
- 1 Blinking Yellow — A half-duplex link is up and collisions are occurring.

1 Off — The link is down.

---

## Rear Panel Descriptions

The rear panel of the system contains the two Gigabit stacking ports and an AC power receptacle.



## AC Power Receptacle

The switch automatically adjusts its power setting to any supply voltage in the range 90-240 volt AC.


---

## Management

The following sections describe methods you can use to manage the switch.

### Web-Based Interface

After you have successfully installed the switch, you can configure the switch, monitor the LED panel, and display statistics graphically using a web browser like Netscape Navigator version 6.0 and higher or Microsoft IE version 4.01 and higher.

 **NOTE:** To access to the switch via a web browser, the PC running the web browser must have IP- based network access to the switch.

### Menu-Driven Console Interface via Serial Port or Telnet

You can also connect a computer or terminal to the serial console port or use Telnet to access the switch. The interface is menu-driven so you do not need to use a complex command syntax. The menus are similar to those in the web interface. For more information, see "[Console Interface](#)."

### SNMP-Based Management

You can manage the switch with an SNMP-compatible console application. The switch is compatible with SNMP version 1.0.

The SNMP agent decodes the incoming SNMP messages and responds to these requests with MIB objects stored in the database. For statistics and counters, the SNMP agent updates the MIB objects every 5 seconds.

The switch supports a comprehensive set of MIB extensions as the following list indicates:

- 1 MIB II
  - 1 Ethernet Interface MIB
  - 1 Bridge MIB
  - 1 4 RMON groups
    - o Ethernet statistics group
    - o Ethernet history group
    - o Alarm group
    - o Event group
- 

[Back to Contents Page](#)

[Back to Contents Page](#)

# Installation

## Dell™ PowerConnect™ 3024 Systems User's Guide


- [Package Contents](#)
  - [Before You Connect to the Network: Mounting Kit Instructions](#)
  - [Connecting the Console Port](#)
  - [Password Protection](#)
  - [IP Address Assignment](#)
  - [Stacking](#)
  - [Connecting Devices to the Switch](#)
- 

## Package Contents

Before you begin installing the switch, confirm that your package contains the following items:

- 1 Switch
  - 1 Stacking cable
  - 1 AC power cord
  - 1 Null modem cable
  - 1 Self-adhesive rubber pads for desktop installation
  - 1 Rackmount kit for rack installation
  - 1 *PowerConnect Systems System Information Guide*
- 

## Before You Connect to the Network: Mounting Kit Instructions

 **NOTICE:** Do not connect the switch to the network until you have established the correct Internet Protocol (IP) settings.

Before you connect to the network, you must install the switch on a flat surface or in a rack, set up a terminal emulation program, and plug in the power cord. Then you will set up a password and IP address.

The switch is supplied with rubber feet for stationing it on a flat surface and mounting brackets and screws for mounting it in a rack.

### Installing on a Flat Surface

The switch can be installed on any appropriate level surface that can safely support the weight of the hubs and their attached cables. There must be adequate space around the switch for ventilation and access to cable connectors.


To install the switch on a flat surface, complete the following steps:

1. Set the switch on the flat surface and check for proper ventilation.  
Allow at least 2 inches (5.1 cm) on each side for proper ventilation and 5 inches (12.7 cm) at the back for power cord clearance.
2. Attach rubber feet on each marked location on the bottom of the chassis.

The rubber feet are optional but recommended to keep the unit from slipping.

### Installing in a Rack

The switch can be installed in most standard 19-inch (48.3-cm) racks.

 **NOTE:** For racks that are not prethreaded, cage nuts are provided.

To install the switch in a rack, complete the following steps:

1. Use the supplied screws to attach a mounting bracket to each side of the switch.
  2. Position the switch in the rack and align the holes in the mounting bracket with the holes in the rack.
  3. Insert and tighten two screws appropriate for your rack through each of the mounting brackets.
- 

## Connecting the Console Port

The switch provides an RS-232 serial port that enables a connection to a PC or terminal for monitoring and configuring the switch. This port is a male DB-9 connector, implemented as a data terminal equipment (DTE) connection.

To use the console port, you need the following equipment:


1. A terminal or TTY-compatible terminal, or a PC or portable system with a serial port and the ability to emulate a terminal.
1. A null modem or crossover RS-232 cable with a female DB-9 connector for the console port on the switch.

To connect a terminal to the console port, complete the following steps:

1. Connect the female connector of the RS-232 cable directly to the console port on the switch, and tighten the captive retaining screws.
2. Connect the other end of the cable to a terminal or the serial connector of a PC running terminal emulation software.

Make sure the terminal emulation software is set as follows:


- a. Select the appropriate serial port (serial port 1 or serial port 2).
- b. Set the data rate to 9600 baud.
- c. Set the data format to 8 data bits, 1 stop bit, and no parity.
- d. Set flow control to *none*.
- e. Under **Properties**, select **VT100 for Emulation** mode.
- f. Select **Terminal keys** for **Function, Arrow, and Ctrl keys**. Make sure the setting is for **Terminal keys**, *not* **Windows keys**.

 **NOTICE:** When using HyperTerminal with Microsoft® Windows® 2000, make sure that you have Windows 2000 Service Pack 2 or later installed. Windows 2000 Service Pack 2 fixes the problem of arrow keys not functioning in HyperTerminal's VT100 emulation. See [www.microsoft.com](http://www.microsoft.com) for information on Windows 2000 service packs.

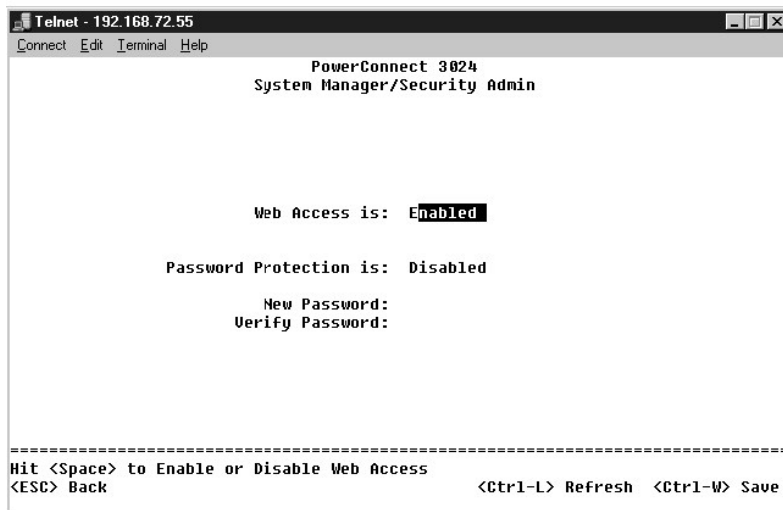
3. Once you have set up the terminal correctly, plug the power cord into the power receptacle on the back of the switch. The boot sequence appears in the terminal.

---

## Password Protection

 **NOTE:** The first time you set up Password Protection, you must do it from the console screen. Once the switch is set up, it can be managed through the web interface. See "[Web Interface](#)" for more information.

From the initial welcome screen, you must enter a password to proceed, if password protection is enabled. If password protection is disabled, the Main Menu is displayed and you immediately have access to the switch management interface. By default, password protection is disabled. If enabled, the default user name is `root` and the password is `switch`.



```
Telnet - 192.168.72.55
Connect Edit Terminal Help

PowerConnect 3024
System Manager/Security Admin

Web Access is: Enabled

Password Protection is: Disabled


New Password:
Verify Password:

-----
Hit <Space> to Enable or Disable Web Access
<ESC> Back          <Ctrl-L> Refresh  <Ctrl-W> Save
```

To prevent unauthorized access to the switch, you can turn on password protection.

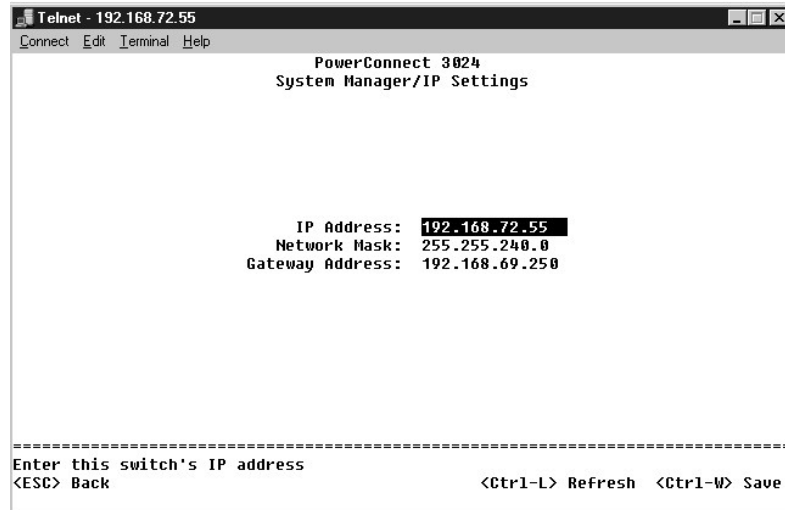
1. Select **System Manager** and press <Enter>.  
Use the <Tab> key to navigate the menu.
2. Select **Security Admin**.
3. Type your password and press <Enter>.

4. Type your password again to confirm it. Press <Enter>.
5. Press <Ctrl><w> to save your changes.

 **NOTE:** If you enable password protection without setting your own password, the default password is `switch`. The user name is always `root`.

---

## IP Address Assignment




Before you can assign an IP address to the switch, you must obtain the following information from your network administrator:

- 1 IP address for the switch
- 1 default gateway for the network
- 1 network mask for this network

To assign an IP address to the switch, complete the following steps:


1. From the Main Menu, select **System Manager**. Press <Enter>.
2. Select **IP Settings**.
3. In the first field, type the correct IP address for this system.
4. In the second field, enter the network mask for this network.
5. In the third field, enter the IP address of the default gateway for the network to which the switch belongs.
6. Press <Ctrl><w> to save your changes.
7. After making IP changes, you must reboot the system. Press <Esc> twice to return to the Main Menu.
8. Select **System Manager** and then select **Reset** to reboot the switch.

 **NOTICE:** You must reboot the system from the **System Manager/Reset** page for the changes to take effect.

9. Confirm the reset.
- 

## Stacking


A stacked switch configuration combines between 2 and 6 units into a stack of switches. The units are connected in a daisy-chain architecture using the gigabit stacking ports. The stack can be managed as a single entity through the IP address or serial port of the root unit.

 **NOTICE:** If you are using the system in a stand-alone configuration, the stacking cable supplied with your switch is not used.


## Creating a Stack

To create a stack, perform the following steps:

1. Perform Password Protection and IP Address Assignment for the root unit, the first unit of the stack.
2. Make sure to unplug the power cords of all the units in the stack.
3. Place or mount all units of the stack on top of each other with the root unit at the bottom of the stack.
4. Connect the stacking cable of the root unit to its STACK OUT port on the back of the unit.
5. Connect the stacking cable of the root unit to the STACK IN port of the second unit in the stack.


 **NOTICE:** The STACK IN port of the root unit is always unconnected.

6. Repeat steps 4 and 5 for each additional unit in the stack. That is, connect the STACK IN port of each unit to the STACK OUT port of the previous unit.

 **NOTICE:** The STACK OUT port of the last unit in the stack is always unconnected.

7. Plug in the power cords of the stack units starting with the unit on the top and proceed in order, with the root unit being the last unit to be powered up.


The stack is now operational and can be managed through the root unit.

 **NOTICE:** Never unplug a stacking cable while the unit is powered up.

## Removing a Unit from a Stack

Perform the following steps to remove a unit from a stack.

1. Disconnect the power cords of all units in the stack.
2. Disconnect all devices from the last unit in the stack.
3. Disconnect the stacking cable connected to the STACK IN port on the last unit in the stack.
4. Remove the unit from the stack.
5. Disconnect the stacking cable connected to the STACK OUT port of the now last unit in the stack. This stacking cable is no longer used in the stack.

 **NOTICE:** The STACK OUT port of the last unit in the stack is always unconnected.

6. Plug in the power cords of the stack units starting with the unit on the top and proceed in order, with the root unit being the last unit to be powered up.


The stack is now operational and can be managed through the root unit.

 **NOTICE:** Never unplug a stacking cable while the unit is powered up.

## Adding a Unit to a Stack

Perform the following steps to add a unit to a stack.

1. Disconnect the power cords of all units in the current stack and the new unit to be added to the stack.
2. Connect the new unit's stacking cable to the STACK OUT port of the topmost unit in the current stack.
3. Place or mount the new unit on the top of the stack.
4. Connect the unattached end of the stacking cable described in step 2 to the new unit's STACK IN port.

 **NOTICE:** The STACK OUT port of the last unit in the stack is always unconnected.

5. Plug in the power cords of the stack units starting with the new unit on the top and proceed in order, with the root unit being the last unit to be powered up.

The stack is now operational and can be managed through the root unit.

---

## Connecting Devices to the Switch

At this point, you are ready to use appropriate network cabling to connect devices to the switch's RJ-45 connectors.

To connect a device to a GBIC port, do the following:

1. Use your cabling requirements to select an appropriate GBIC module type.
2. Insert the GBIC module (sold separately) into the GBIC slot.




3. Use the appropriate network cabling to connect a device to the connectors on the GBIC module.
4. Enable the GBIC port in the web or console management interface by performing the following steps:

**Web interface:**

- o Select Port Manager, then select GBIC.
- o To enable the GBIC module, select GBIC for the desired port.

**Console interface**

- o Select Port Manager.
- o Place the cursor over the desired port number and press the spacebar to enable the GBIC module.

 **NOTICE:** Enabling the GBIC port disables the associated built-in 10/100/1000BASE-T port.

---

[Back to Contents Page](#)

[Back to Contents Page](#)

## Web Interface


### Dell™ PowerConnect™ 3024 Systems User's Guide

- [Web Pages](#)
- [Home](#)
- [System Manager](#)
- [Port Manager](#)
- [Address Manager](#)
- [Spanning Tree](#)
- [VLAN & CoS](#)
- [Port Trunking](#)
- [Port Mirroring](#)
- [SNMP](#)
- [Multimedia Support](#)
- [Statistics](#)
- [Save Configuration](#)

With web-based management, you can configure the PowerConnect 3024 Fast Ethernet Managed Switch and monitor the system using a web browser.

Most web pages for the switch feature the following buttons:

- 1 **Reload** — Displays the current values for the system related to the web page that is open.
- 1 **Apply** — Makes changes to the system and refreshes the page. These changes do not persist past the current session.


 **NOTICE:** For changes to persist beyond the current session, you must save the new configuration from the **Save Configuration** page.

- 1 **Add** — Adds new entries to the system and refreshes the page.
- 1 **Remove** — Removes selected entries from the system and refreshes the page.

---

## Web Pages

When you connect to the management mode of the switch with a web browser, a login screen is displayed (if password protection has been enabled). The user name is always `root`. Enter the password to access the switch's management mode.

 **NOTE:** The default password is `switch`.

You can manage a stack of up to six units through the web interface. On most pages, you must select the unit in the stack you want to see in the web interface. Where space permits, all six units of the stack are displayed, but only those units that are actually present in the stack are active; the units not used are grayed out.


The following menus are available from the web interface:

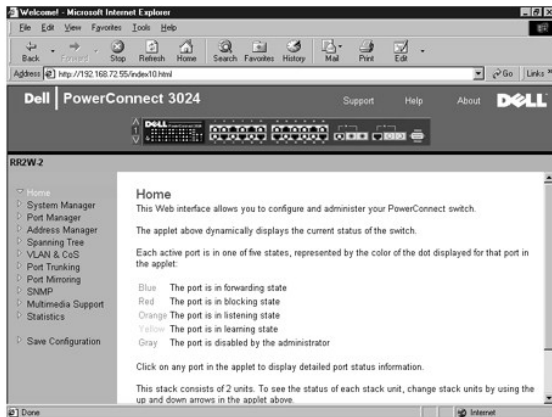
- 1 **Home**
- 1 **System Manager**
- 1 **Port Manager**
- 1 **Address Manager**
- 1 **Spanning Tree**
- 1 **VLAN and CoS**
- 1 **Port Trunking**
- 1 **Port Mirroring**
- 1 **SNMP**
- 1 **Multimedia Support**
- 1 **Statistics**
- 1 **Save Configuration**

---

## Home

The Home page describes the dynamic switch applet.

 **NOTE:** If the system is used in a stack configuration, the arrow keys on the left side of the applet allow you to select a unit in the stack. The dynamic applet will display the status for the selected unit.



## System Manager

The **System Manager** page contains all system operations and general information. It includes links to the following options:

- 1 General Info — to view general system information and perform general administration.
- 1 IP Settings — to view or edit IP parameters.
- 1 Security Administration — to select user authentication, enable or disable password protection, filter by IP address.
- 1 Firmware Upgrade — to TFTP the latest firmware for upgrade.
- 1 Configuration — to save configuration files to a server or load configuration files from a server.
- 1 Reset — to reboot the switch.

## General Information

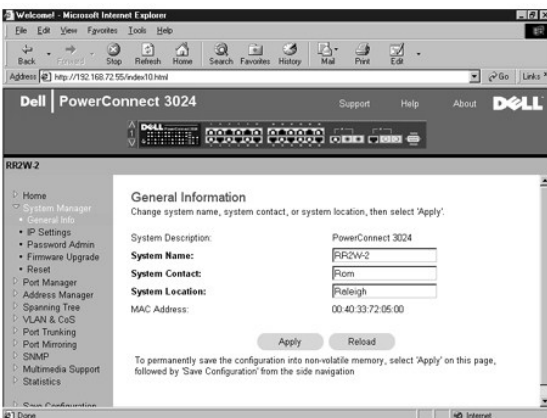
The **General Info** page contains the following information:

- 1 **System Description**
- 1 **MAC Address**

It also includes the following editable fields:

- 1 **System Name**
- 1 **System Contact**
- 1 **System Location**

To save any changes you make in this page, click **Apply**. To reset these fields to their current value, click **Reload**.



## IP Settings

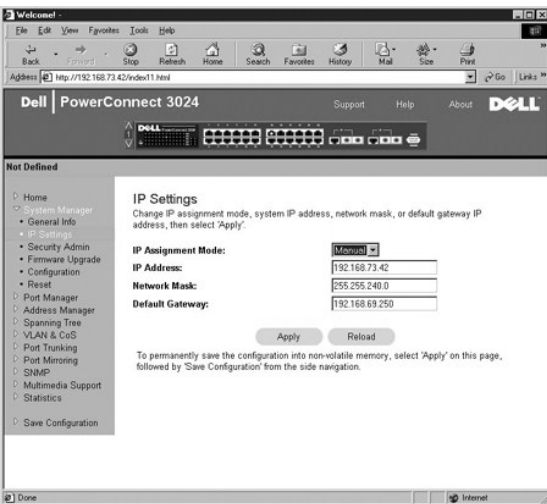
In the **IP Settings** page, you can manage the IP related information about the system. The page includes the following editable fields:

- 1 **IP address**
- 1 **Gateway address**
- 1 **Network mask**
- 1 **IP Assignment Mode** — Sets whether IP functionality is enabled through manual (static) configuration or set by Dynamic Host Configuration Protocol (DHCP) or Boot Protocol (BootP).
  - o **Manual** — Sets static IP address.
  - o **BootP** — Gets IP address from a BootP server.
  - o **DHCP** — Gets IP address from a DHCP server.

To save any changes you make in this page for the current session, click **Apply**. To reset these fields to their current value, click **Reload**.


For IP address changes to take effect, perform the following steps:

1. From the **Save Configuration** page, save your changes beyond the current session.
2. Reboot the system from the **System Manager/Reset** page.



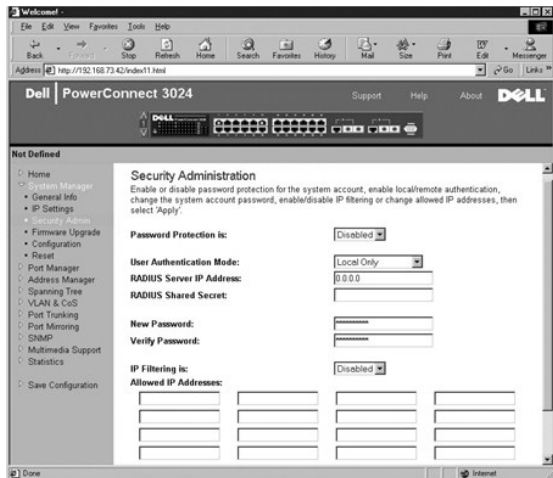
## Security Administration

- 1 **User Authentication Mode** — Selects the authentication or authentication sequence required.
  - o **Local Only** — The switch authenticates the user.
  - o **Local then Remote** — The switch attempts to authenticate the user first, and then a RADIUS server attempts to authenticate the user.
  - o **Remote then Local** — A RADIUS server attempts to authenticate the user first, and then the switch attempts to authenticate the user.
  - o **Remote Only** — A RADIUS server authenticates the user.
- 1 **RADIUS Server IP Address** — Identifies the IP address of the RADIUS server.
- 1 **RADIUS Shared Secret** — Specifies the text string that is shared between the switch and the RADIUS server.
- 1 **IP Filtering** — Allows up to 16 IP addresses to access the switch management function, if enabled.
- 1 **Password Admin** — Enables or disables password protection.

 **NOTE:** The default password is `switch`.

- 1 **Allowed IP Addresses** — Provides an option to enter up to 16 IP addresses in the Allowed IP Address table.
- 1 **Disable Telnet/Web Access (Console Only)** — Provides an option to enable or disable Telnet or Web access to the switch.

To save any changes you make in this page, click **Apply**. To reset these fields to their current value, click **Reload**.



## Firmware Upgrade

From the **Firmware Upgrade** page, you can configure the system to download a new version of the management software. You can also set the system to use the new software without overwriting the previous version. See "[Software Upgrades](#)" for more information about this process.

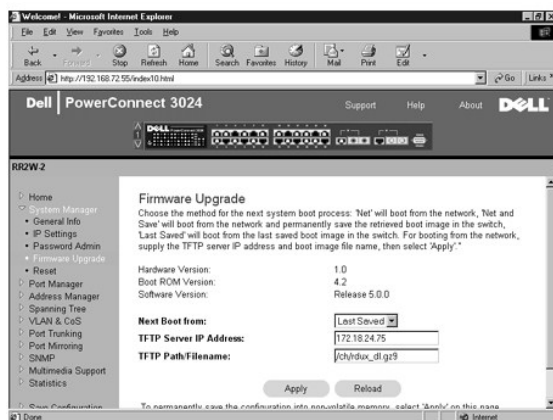
The Firmware Upgrade page contains the following information:

- 1 **Current Hardware Version**
- 1 **Current Boot ROM Version**
- 1 **Current Software Version**

It also contains the following editable fields:

- 1 **Next Boot from** — to indicate the location of the software version you want to run. The following options are available:
  - o **Net option** — This is the default setting. Use this option to try out a new version of the software before upgrading. This option runs the software from an internet location you specify. You must also complete the **TFTP Server IP Address** and **TFTP Path/Filename** fields.
  - o **Net & save option** — This option overwrites the current version of the software with the downloaded file. You must also complete the **TFTP Server IP Address** and **TFTP Path/Filename** fields.
  - o **Last Saved option** — This option automatically shows up after the Net & save option is selected and the system is reset.
- 1 **TFTP Server IP Address** — to indicate the server from which the system must retrieve the new version of the software resides.
- 1 **TFTP Path/Filename** — to indicate the path and name of the software file to download.

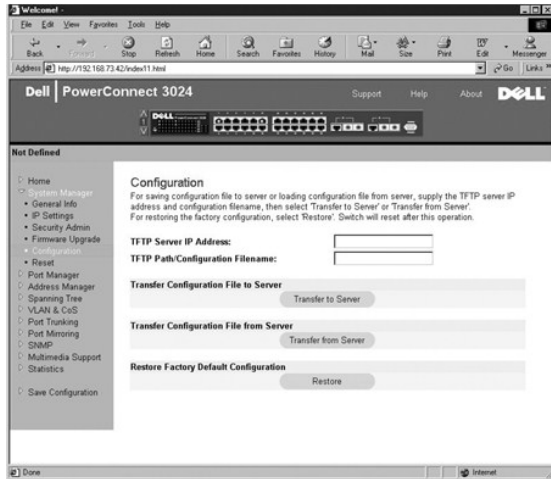
**NOTICE:** For changes to persist beyond the current session, you must save the new configuration from the **Save Configuration** page. You must reboot the system from the **System Manager/Reset** page to start the firmware upgrade.



## Configuration

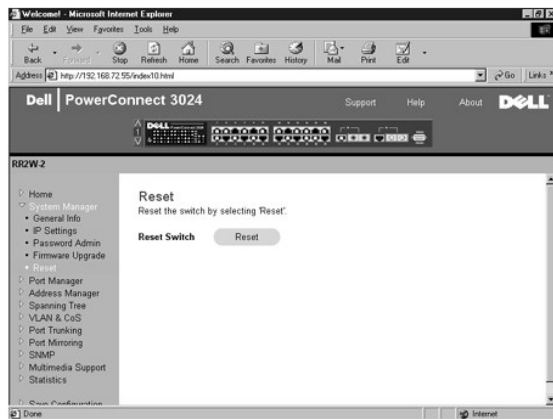
- 1 To save the switch's current configuration file to a server, supply the TFTP server IP address and configuration filename, and then select **Transfer Configuration File to Server**. To load a configuration file from a server, supply the TFTP server IP address and configuration filename, and then select **Transfer Configuration File from Server**.

- 1 To restore the preinstalled configuration, select **Restore**.
- 1 **TFTP Server IP Address** — Inserts the TFTP Server IP Address to save or load.
- 1 **TFTP Path/Configuration Filename** — Inserts the TFTP Path and configuration filename to save or load.
- 1 **Transfer Configuration File to Server**— Saves the switch configuration file to a server.
- 1 **Transfer Configuration File from Server** — Loads a configuration file from a server to the switch.
- 1 **Restore** — Restores preinstalled default settings.



## Reset

Select **Reset** to reboot the switch. When prompted, confirm that you want to reset the switch.



## Port Manager

The Port Manager contains links to the following options:

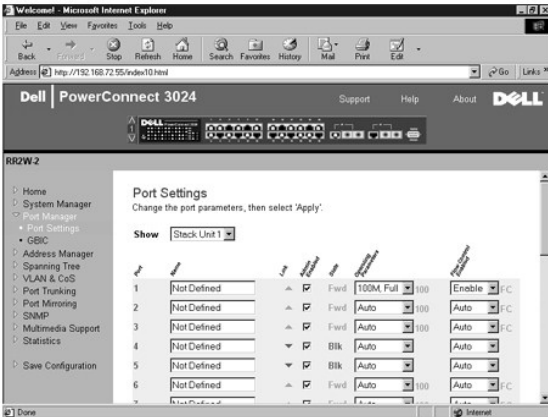
- 1 Port Settings
- 1 GBIC

## Port Settings

On this page, you can view and edit port parameters. For each port number listed under the Port column, you can change the following parameters listed by column name on the screen:


- 1 **Name** — Indicates a user-defined label for the port.

- 1 **Link** — Indicates the status of the link: Up or Down.
- 1 **Admin Enabled** — Allows the network administrator to manually disable a port.
- 1 **State** — Describes the state of the port as determined by the Spanning Tree Protocol.
- 1 **Operating Parameters** — Allows automatic or manual selection of port speed and duplex mode.
- 1 **Flow Control Enabled** — Allows automatic or manual selection of support for flow control.



## GBIC

From the **GBIC** page, you can enable the GBIC slot instead of the built-in 10/100/1000BASE-T port for each of the two Gigabit Ethernet uplinks.

 **NOTICE:** Enabling the GBIC port disables the built-in 10/100/1000BASE-T port.

To save any changes you make in this page for the current session, click **Apply**. To reset these fields to their current value, click **Reload**.



## Address Manager

The Address Manager page includes links to the following pages:

- 1 Static Addresses
- 1 Dynamic Addresses
- 1 Address Aging

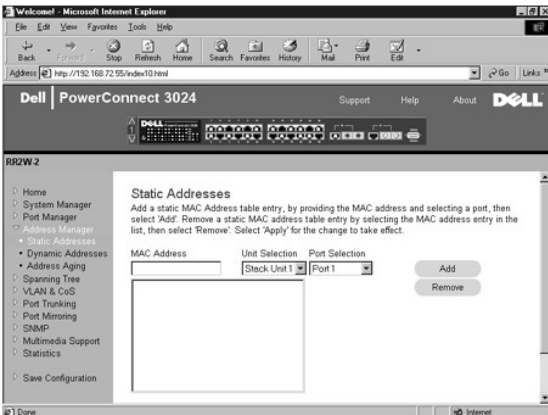
## Static Addresses

From the **Static Addresses** page, you can specify the Media Access Control (MAC) address and port number of systems that are to remain available to the switch for an indeterminate amount of time.

The following options are available:

- 1 **MAC Address** — to enter the MAC address of a system you want to set as static.
- 1 **Port Selection** — to select the port associated with that system.
- 1 **List box**—lists all static addresses.
- 1 **Add** — adds any address when you select it from the list box and click the **Add** button.
- 1 **Remove** — removes any address when you select it from the list box and click the **Remove** button.

To save any changes you make in this page for the current session, click **Apply**. To reset these fields to their current value, click **Reload**.



## Dynamic Addresses

The Dynamic Address lookup table allows you to view the MAC addresses that are currently in the address database. When addresses are in the database, the packets intended for those addresses are forwarded directly to those ports. You can filter out the table by port, VLAN, and MAC address by checking those fields.

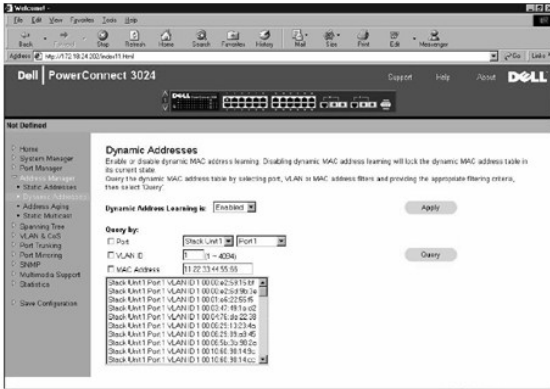
Dynamic MAC address learning is enabled by default. This is the standard mode for a network switch. In some networks, the administrator may want to create a secured network by disabling the dynamic address learning capabilities. When this is done, all current dynamic address entries will be locked in. These addresses will not age out and new addresses will not be learned.

In addition, if a new address is detected on a port, the switch will disable the port with the new address, save the current settings to NVRAM, and send out a Simple Network Management Protocol (SNMP) trap warning. This feature is used to block computers that were not on the network before the lockdown from attempting to access the network. Once a port is automatically disabled, the administrator can reenoble the port manually. The NVRAM will only be saved the first time a given port detects a new address. The aging time should be raised before disabling the dynamic address learning to provide enough time for the switch to learn all current MAC addresses without the possibility of aging out.

This page contains the following options by which to query the dynamic MAC address table:

- 1 **Port** — check the option box and select a port from the drop-down list.
- 1 **VLAN ID** — check the option box and type the appropriate VLAN ID.
- 1 **MAC Address** — check the option box and select the address from the list box provided.
- 1 **Query** button — click this button to execute the query once you have selected the criteria for the query.
- 1 **Dynamic Address Learning** — Enable or disable dynamic address learning.





## Address Aging

In the **Address Aging** page, you can specify how long an address stays available to the switch if it is not configured as static.

The following option is available:

- 1 **Aging Time** — sets the time before an address is purged from system. You can change this value to any number between 10 and 1,000,000 seconds.

To save any changes you make in this page, click **Apply**. To reset these fields to their current value, click **Reload**.



## Spanning Tree

The **Spanning Tree** page contains links to the following pages that allow you to specify the parameters of the spanning tree protocol:

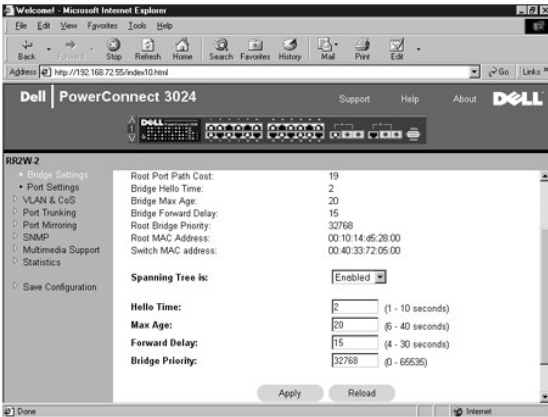
- 1 **Bridge Settings**
- 1 **Port Settings**

### Bridge Settings

From the **Bridge Settings** page, you can enable and configure the Spanning Tree. The following options are available:

- 1 **Enable** — turns the Spanning Tree on. If you enable the Spanning Tree, you must complete the following fields:
  - o **Hello Time** — sets the interval between configuration messages sent by the spanning tree protocol.
  - o **Max Age** — sets the amount of time before the system discards a configuration message.
  - o **Forward Delay** — sets the amount of time the system spends in *learning* and *listening* states.
  - o **Bridge Priority** — sets the priority setting among other switches in the spanning tree.
- 1 **Disable** — disables the spanning tree protocol on the system.


To save any changes you make in this page for the current session, click **Apply**. To reset these fields to their current value, click **Reload**.

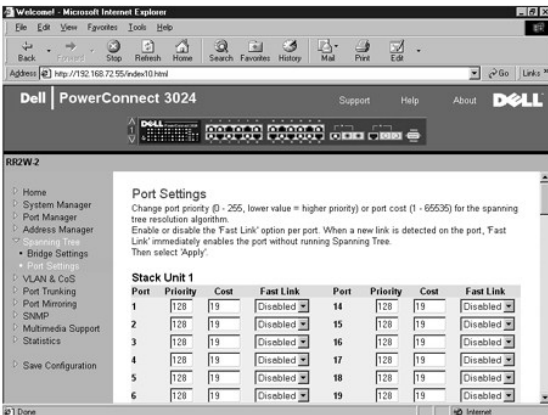


## Port Settings

In the **Port Settings** page, you can specify spanning tree parameters for each port. This page is in a table format. For each port number listed under the Port column, the following fields are available:

- 1 **Priority** — Priority assigned to this port for the Spanning Tree Protocol (0 - 255). A port with a higher priority is less likely to be blocked if the Spanning Tree Protocol is detecting network loops. Low numeric value indicates a high priority.
- 1 **Cost** — Cost assigned to this port for the Spanning Tree Protocol (1 - 65536). A port with a lower cost is less likely to be blocked if the Spanning Tree Protocol is detecting network loops.
- 1 **Fast Link** — Fast Link immediately enables the port in forwarding state when a link comes up. The port is not part of the Spanning Tree at that time, but will participate in future Spanning Tree Resolutions.

 **NOTE:** This option is useful if a device is connected to a port that requires network access immediately when the link comes up and cannot wait for a Spanning Tree resolution.



## VLAN & CoS

The **VLAN & CoS** page includes links to the following pages:

- 1 VLAN & CoS Tagging
- 1 Default Port VLAN
- 1 Default Port CoS
- 1 Layer 3 Priority — DiffServ

## VLAN & CoS Tagging

In the **Membership** page, you define VLAN groups. The following options are available:

- 1 **Show VLAN** — Select the VLAN for which you want to edit the membership setting.

- 1 **Name** — User-defined name of the VLAN
- 1 **VLAN ID** — Numeric ID of the VLAN (1 - 4094)
- 1 **Remove VLAN** checkbox — Check this box to remove an existing VLAN
- 1 **Port Toggle Buttons** — Select VLAN membership for each port by toggling the value of the port button:
  - o <U>: Port is a member of the VLAN. All packets transmitted by the port will be untagged, that is, not carry a tag and therefore not carry VLAN or CoS information.
  - o <T>: Port is a member of the VLAN. All packets transmitted by the port will be tagged, that is, carry a tag and therefore carry VLAN or CoS information.
  - o <BLANK>: Port is not a member of the VLAN. Packets associated with this VLAN will not be transmitted by the port.

The VLAN tagging option is a standard set by the IEEE to facilitate the spanning of VLANs across multiple switches. For more information, see the "[Appendix](#)" and IEEE Std 802.1Q-1998 Virtual Bridged Local Area Networks.

To save any changes you make in this page, click **Apply**. To reset these fields to their current value, click **Reload**.

The following tasks can be completed from this page:

### Add VLAN Group

1. Under the **Show VLAN** drop-down menu, select **Add a new VLAN**.
2. Complete the VLAN Name and VLAN ID fields.
3. Add VLAN members.  
  
See the procedure "[Add VLAN Membership](#)" later in this section for more information.
4. Click **Apply**.

### Remove VLAN Group

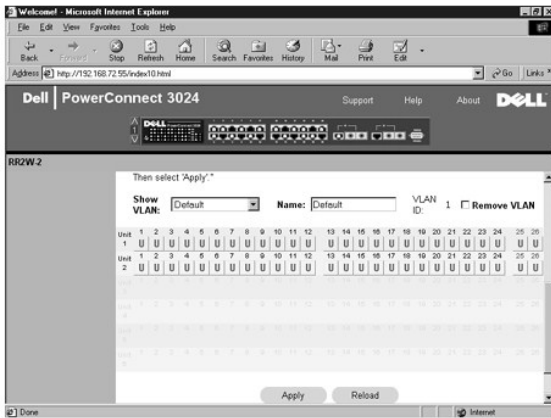
1. Under the **Show VLAN** drop-down menu, select the VLAN you want to remove.
2. Check the **Remove VLAN** box for the VLAN you want to remove.
3. Click **Apply**.

### Add VLAN Membership

1. Under the **Show VLAN** drop-down menu, select the VLAN you want to edit.
2. Change the VLAN member by clicking on the port icon until the desired state [**T** (tagged) or **U** (untagged)] or blank appears.
3. Click **Apply**.

### Remove VLAN Membership

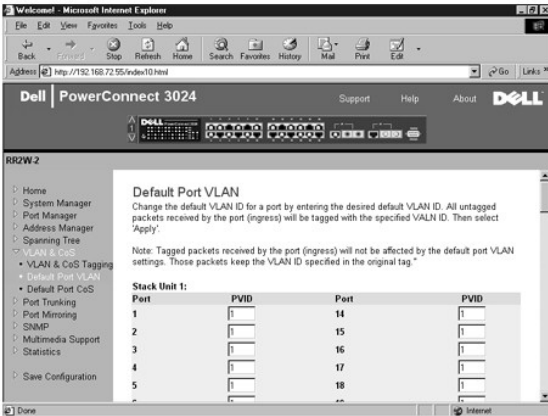
1. Under the **Show VLAN** drop-down menu, select the VLAN you want to edit.
2. Change the VLAN member by clicking on the port icon until the desired state (blank) appears.
3. Click **Apply**.



### Default Port VLAN

In the **Default Port VLAN** page, you can specify the default port VLAN ID (PVID) for each port on your switch. All untagged packets entering the switch are tagged by default with the ID specified by the port's PVID.

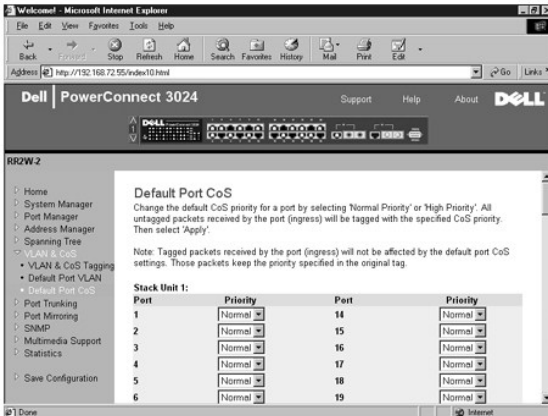
This page is set up in a table format. For each port listed in the Port column, you can type a PVID in the PVID column.



## Default Port CoS

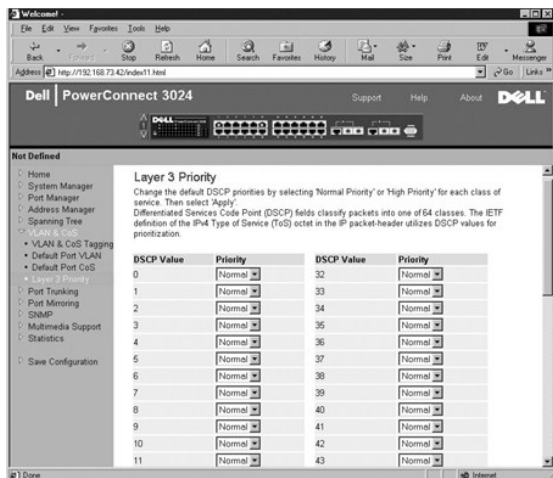
Port Priority allows the user to specify which ports have greater precedence in situations where traffic may be buffered in the switch due to congestion. The ports with a setting of "high" will transmit their packets before those with a "normal" setting. The settings on this page only affect ingress packets that are not already tagged for priority. To raise the priority of a given port, switch the port's setting from "normal" to "high." The default and normal setting for a port is "normal."

In the **Default Port CoS** page, you can specify the priority for each port on your switch.



## Layer 3 Priority – DiffServ

- 1 DiffServ — You can change the default ToS priority by selecting **Normal Priority** or **High Priority** for each class of services. This setting leverages the IETF definition of the IPv4 Type of Service (ToS) octet in the IP packet-header by using the Differentiated Services Code.
- 1 Point (DSCP) field (6 bits) classifies packets into any of the 64 possible classes.



## Port Trunking

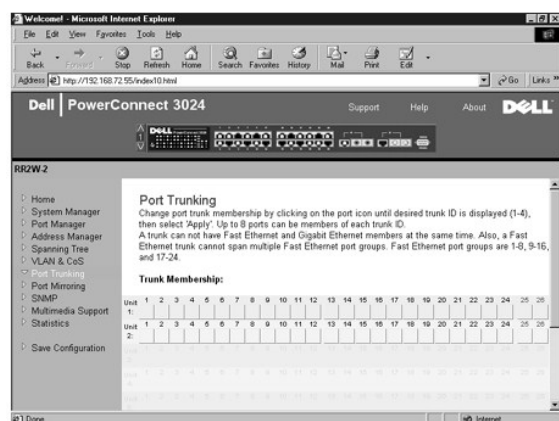
In the **Port Trunking** page, you can create multiple links between switches that work as one virtual, aggregate link. You can create four trunks at a time, with each trunk containing up to eight ports. Only ports of the same speed can belong to a single trunk: 10/100 Fast Ethernet ports and Gigabit Ethernet ports cannot be in the same trunk.

- ➔ **NOTICE:** Fast Ethernet trunks can only include ports from a single eight-port cluster: Ports 1 to 8, ports 9 to 16, or ports 17 to 24.
- ➔ **NOTICE:** Built-in 10/100/1000BASE-T ports cannot be trunked with GBIC ports.

To add a port to a trunk, click the toggle button below the port number until the correct trunk number appears.

- ➔ **NOTICE:** All ports participating in a trunk must be operating in Full Duplex mode.
- ➔ **NOTICE:** All ports participating in a trunk should have the same VLAN and CoS settings.

To save any changes you make in this page, click **Apply**. To reset these fields to their current value, click **Reload**.



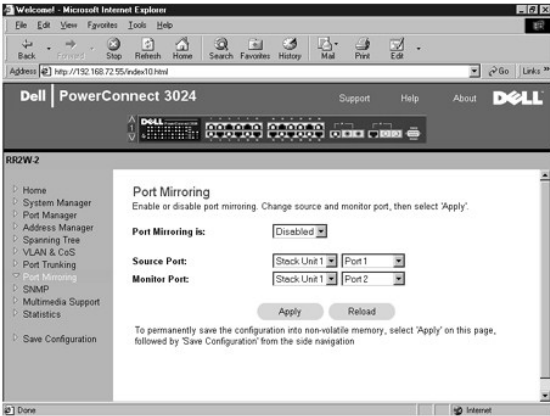
## Port Mirroring

From the **Port Mirroring** page, you can enable or disable port mirroring. You can also set the source port and monitor ports. Port mirroring helps you debug a network.

The following options are available:

- 1 **Port Mirroring** — Enables or disables port mirroring.
- 1 **Source Port** — Port from which all traffic will be mirrored to the monitor port.
- 1 **Monitor Port** — Port that receives a copy of all traffic that the source port receives.

To save any changes you make in this page for the current session, click **Apply**. To reset these fields to their current value, click **Reload**.



## SNMP

The SNMP menu contains links to the following pages:

- 1 **Community Table**
- 1 **Host Table**
- 1 **Trap Settings**

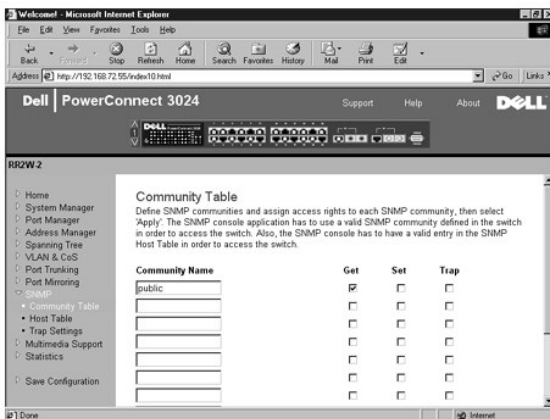
## Community Table

In the **Community Table** page, you can create different communities and customize access. The public string has Get privileges by default.

The following options are available:

- 1 **Community Name** — Type the name of the community you want to create.
- 1 **Get** — Allows read access to the switch's SNMP information for members of the SNMP community.
- 1 **Set** — Allows write access to the switch's SNMP information for members of the SNMP community.
- 1 **Trap** — Allows members of the SNMP community to receive SNMP traps.

To save any changes you make in this page, click **Apply**. To reset these fields to their current value, click **Reload**.



## Host Table

From the **SNMP Host Table** page, you can add and remove hosts from access rights that have been granted to community groups. The permissions GET, SET, and TRAP are assigned to a community name and then these permissions are assigned to individual machines by adding those machines and their IP address to the appropriate community string. Host authorization can be enabled or disabled.


If the host authorization is disabled (the default setting), the switch allows any SNMP manager to access the switch. If the host authorization is enabled, the administrator can specify up to 16 SNMP managers on the host table that can access the switch.

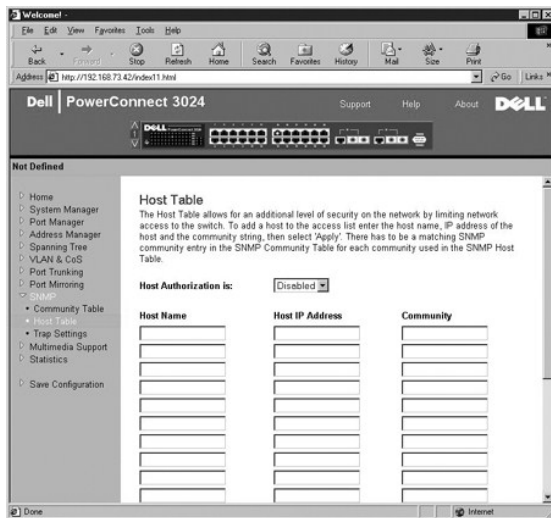
You must enable host authorization before you can use the host table. Host authorization is a security feature to limit people who are not listed in the host table from accessing the switch.

Once you have enabled host authorization, you must add the host to this table through the console port connection. Otherwise, the switch cannot access the end station using SNMP.

The following fields are available:

- 1 **Host Name** — User-defined name of the SNMP host.
- 1 **Host IP Address** — IP address of the SNMP host authorized to communicate with the switch via SNMP.
- 1 **Community** — Community name of the SNMP community that the host is a member of.

 **NOTE:** The community name specified here must exist in the switch's SNMP Community Table.



## Trap Settings

The SNMP Trap Setting allows for the setup of authentication traps.

Authentication traps can be enabled or disabled:

- 1 **Enabled** — The system generates an SNMP trap upon a host authorization failure.
- 1 **Disabled** — The system does not generate authentication traps.

All hosts in community strings with trap privileges are notified when a trap condition occurs.



---


## Multimedia Support

There are two settings available from this page: IGMP and High Priority Optimization.



## IGMP

With IGMP (Internet Group Management Protocol) Snooping, you can configure the switch to forward multicast traffic intelligently. Based on the IGMP query and report messages, the switch forwards traffic only to the ports that request multicast traffic. This prevents the switch from broadcasting the traffic to all ports and possibly disrupting network performance.

 **NOTE:** IGMP requires a router that learns about the presence of multicast groups on its subnets and keeps track of group membership.


The IGMP option can be set as follows:

- 1 **Enabled** — The system detects IGMP queries and report packets and manages IP multicast traffic through the switch.
- 1 **Disabled** — The switch forwards traffic and ignores any IGMP requests.

## High-Priority Optimization

 **NOTICE:** Enabling high-priority optimization can effectively disable flow-control for normal-priority packets.

The High-Priority Optimization setting implements a priority-based head-of-line blocking prevention algorithm in the system. This algorithm ensures that in the case of traffic congestion, normal priority packets do not hold up high priority packets.

 **NOTE:** Enabling high priority optimization can improve overall system performance for networks with time-sensitive, prioritized traffic, for example, the traffic associated with multimedia streaming, teleconferencing, or telephony applications.

---



## Statistics

From the Statistics page, you can chart a variety of system data. You can see the value of each bar or line in the chart by clicking on the bar. For each chart, after you have set all the variables, click **Draw**.

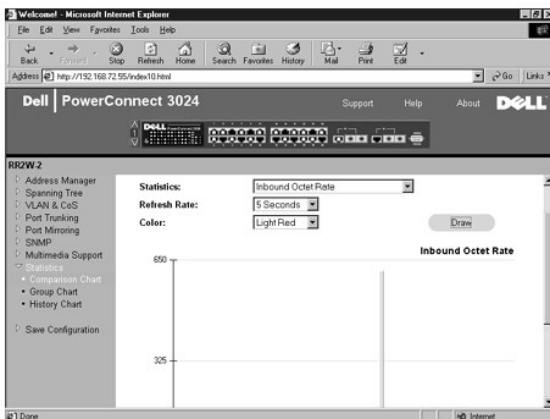
 **NOTE:** Rates are displayed as counts per second. Counters are cumulative from the last time the system was booted.

The following sections describe each type of chart.

## Comparison Chart

The Comparison Chart compares one type of statistic across all of the ports. You must define the following variables:

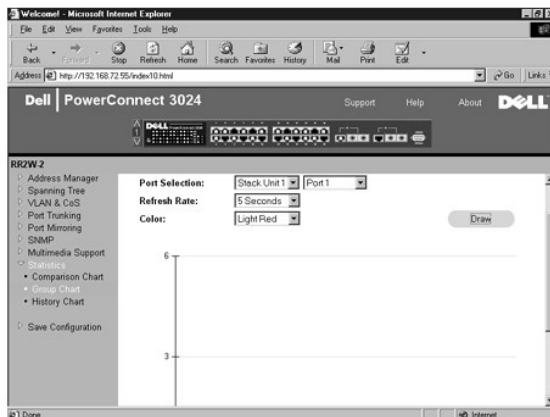
- 1 **Statistics** — The type of system data to monitor.
- 1 **Refresh Rate** — The time interval between automatic refreshes.
- 1 **Color** — The color setting for the chart.



## Group Chart

The Group Chart shows all the statistic types for one port. You must define the following variables:

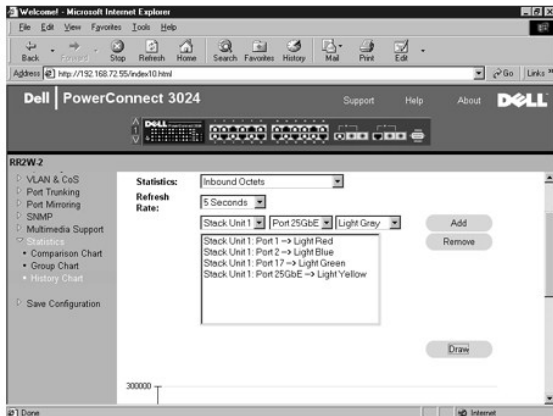
- 1 **Port Selection** — The port for data to monitor
- 1 **Refresh Rate** — The time interval between automatic refreshes
- 1 **Color** — The color setting for the chart



## History Chart

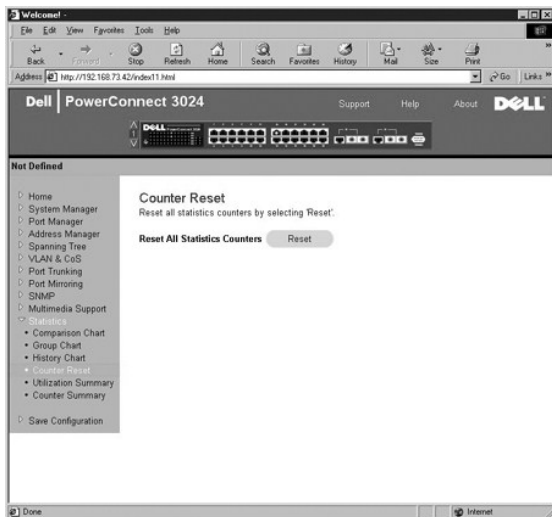
The History Chart charts one type of statistic for any combination of ports. The chart presents data across a set time period so that you can monitor fluctuations over time.

- 1 **Statistics** — The type of system data to monitor
- 1 **Refresh Rate** — The time interval between automatic refreshes
- 1 **Port Selection** — The port for data to monitor



## Counter Reset

The **Counter Reset** page allows you to reset all statistics counters.



## Utilization Summary

The **Utilization Summary** page allows you to view (by port) the link status; percent utilization; and ratios of incoming unicast, nonunicast, and error packets.

Click the **Refresh** button to refresh the **Utilization Summary** page.

Port	Status	%Utilization	%Unicast Received	%Non-Unicast Received	%Errors Received
1	Down	0%	0%	0%	0%
2	Down	0%	0%	0%	0%
3	Down	0%	0%	0%	0%
4	Down	0%	0%	0%	0%
5	Down	0%	0%	0%	0%
6	Down	0%	0%	0%	0%
7	Down	0%	0%	0%	0%
8	Down	0%	0%	0%	0%
9	Down	0%	0%	0%	0%
10	Down	0%	0%	0%	0%
11	Down	0%	0%	0%	0%
12	Down	0%	0%	0%	0%
13	Up	0%	66%	33%	0%
14	Down	0%	0%	0%	0%
15	Down	0%	0%	0%	0%
16	Down	0%	0%	0%	0%
17	Down	0%	0%	0%	0%
18	Down	0%	0%	0%	0%

### Counter Summary

The **Counter Summary** page allows you to view all ports accumulated, transmitted, and received unicast, nonunicast, and error packets.

Click the **Refresh** button to refresh the **Counter Summary** page.

Port	Status	Unicast Received	Unicast Transmitted	Non-Unicast Received	Non-Unicast Transmitted	Errors Received	Errors Transmitted
1	Up	19255	17913	1228	572	10	0
2	Down	0	0	0	0	0	0
3	Down	0	0	0	0	0	0
4	Down	0	0	0	0	0	0
5	Down	0	0	0	0	0	0
6	Down	0	0	0	0	0	0
7	Down	0	0	0	0	0	0
8	Down	0	0	0	0	0	0
9	Down	0	0	0	0	0	0
10	Down	0	0	0	0	0	0
11	Up	5052	5408	567	1220	0	0
12	Down	0	0	0	0	0	0
13	Down	0	0	0	0	0	0
14	Down	0	0	0	0	0	0
15	Down	0	0	0	0	0	0
16	Down	0	0	0	0	0	0
17	Down	0	0	0	0	0	0

### Save Configuration

If you make any changes to the system through the Web interface, you must save the changes in the **Save Configuration** page.

The following options are available:

- 1 **Save Configuration to NVRAM** — Saves changes to the system configuration.
- 1 **Restore Factory Defaults** — Resets the system configuration to its original default settings.

**NOTE:** Network IP settings like IP address, gateway address, and network mask are not restored by this command.



[Back to Contents Page](#)

[Back to Contents Page](#)

## Console Interface


### Dell™ PowerConnect™ 3024 Systems User's Guide

- [User Interface](#)
- [Navigating in the Console Interface](#)
- [Password Protection](#)
- [Main Menu](#)
- [System Manager](#)
- [Port Manager](#)
- [Address Manager](#)
- [Spanning Tree](#)
- [VLAN and CoS Setup](#)
- [Port Trunking](#)
- [Port Mirroring](#)
- [SNMP Management](#)
- [Multimedia Support](#)
- [Statistics](#)

You can access the console, using VT100 terminal emulation, from the RS232 serial port or a telnet connection. The switch offers password protection for this interface.

When the telnet session opens, select **Terminal->Properties**. In the **Terminal Preferences** dialog, verify the following settings:

- 1 Under **Terminal Options**, do the following:
  - o Select **VT100 Arrows**.
  - o Set **Buffer Size** to **25**.
- 1 Under **Emulation**, select the **VT-100/ANSI** radio button.

 **NOTICE:** When using HyperTerminal with Windows 2000, make sure that you have Windows 2000 Service Pack 2 or later installed. Windows 2000 Service Pack 2 fixes the problem of arrow keys not functioning in HyperTerminal's VT100 emulation. See [www.microsoft.com](http://www.microsoft.com) for information on Windows 2000 service packs.

---

## User Interface

The switch offers a menu-driven console interface. Use the arrow keys to move within menus and sub-screens. To select a menu, press the appropriate <arrow> key to highlight the menu, and then press <Enter>. You can also type the letter in front of each menu option to select that option.

The bottom of every screen displays key commands available for that particular screen and sometimes other helpful information. The following list describes common key commands:

- 1 <Esc> — Return to the previous menu or screen, or abort editing
  - 1 <Ctrl><l> — Refresh the screen
  - 1 <Ctrl><d> — Log off
  - 1 <Ctrl><w> — Saves current configuration to NVRAM
  - 1 <Spacebar> — Toggle between possible settings for a field
  - 1 <Enter> — Select a menu item, edit a field, or accept a value after editing a field
  - 1 <Ctrl><x> — Delete a table entry
- 

## Navigating in the Console Interface

Once you configure your system terminal and start the switch, you can log in to the console interface. The first time you log in, you must use the default password, which is `switch`.

The bottom of most screens includes information about navigating in and issuing commands from the console interface. In general, the following information applies:

- 1 To select an option, press the key that is in brackets ([ ]) in the menu and then press the <Enter> key.
- 1 Use the arrow keys to navigate to editable fields.
- 1 Use the space bar to toggle through options in other fields.
- 1 From any screen, press the <q> key and press <Enter> to return to the previous screen.

You can manage a stack of up to six units through the console interface. On most pages, you must select the unit in the stack you want to display. Use the arrow keys to navigate to the unit to display and press <Enter>. Press <Esc> to go back to unit selection.

---

## Password Protection

From the initial welcome screen, you must enter a password to proceed, if password protection is enabled. If password protection is disabled, the Main Menu is displayed and you immediately have access to the switch management interface. By default, password protection is disabled. If enabled, the default

password is switch. For more information about password protection, see "[Security Admin](#)."

---

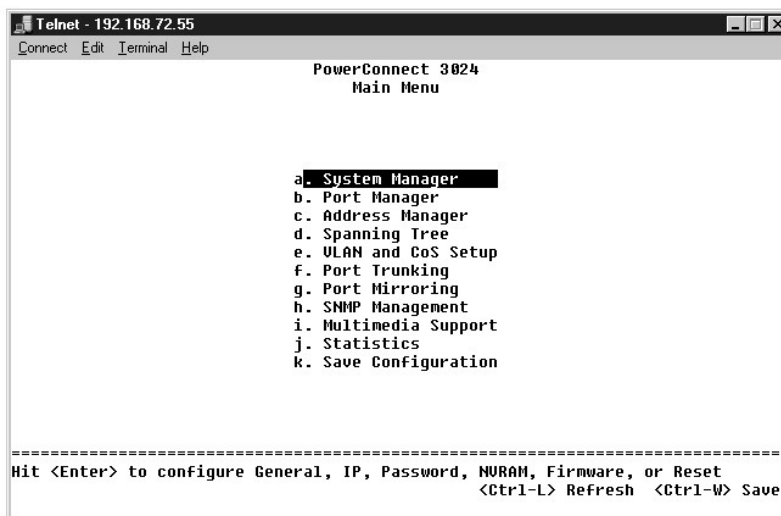
## Main Menu

The main menu displays all the sub-menus and pages that are available.

The following menu items are available:

- 1 System Manager
- 1 Port Manager
- 1 Address Manager
- 1 Spanning Tree
- 1 VLAN and CoS Setup
- 1 Port Trunking
- 1 Port Mirroring
- 1 SNMP Management
- 1 Multimedia Support
- 1 Statistics
- 1 Save Configuration

To log out of the user interface, press <Ctrl><d> at any time during your telnet session. This returns you to the login screen.



## System Manager

The system manager contains all system operations and general information. It includes the following menus:

- 1 **General Info** — to view general system information and perform general administration.
- 1 **IP Settings** — to view or edit IP parameters.
- 1 **Security Admin** — to select user authentication, enable or disable password protection, or filter by IP address.
- 1 **Configuration** — to save configuration files to a server or load configuration files from a server.
- 1 **Firmware Upgrade** — to TFTP the latest firmware for upgrade.
- 1 **Reset** — to reboot the switch.

## General Info

The General Info screen contains the following information:

- 1 **System Description**

- 1 **MAC Address**

It also includes the following editable fields:

- 1 **System Name**
- 1 **System Contact**
- 1 **System Location**

```
Telnet - 192.168.72.55
Connect Edit Terminal Help

PowerConnect 3024
System Manager/General Info

Uptime: 0 Days 0 hr. 17 min. 1 sec.

System Description: PowerConnect 3024
System Name: Not Defined
System Contact: Not Defined
System Location: Not Defined
MAC Address: 00:40:33:72:05:00

-----
Enter a System Name
<ESC> Back                               <Ctrl-L> Refresh <Ctrl-W> Save
```


### IP Settings

This menu manages the IP-related information about the system.

The **IP Settings** page includes the following editable fields:

- 1 **IP address**
- 1 **Network mask**
- 1 **Gateway address**
- 1 **IP Assignment Mode** — Sets whether IP functionality is enabled through manual (static) configuration or set by Dynamic Host Configuration Protocol (DHCP) or Boot Protocol (BootP).
  - o **Manual** — Sets static IP address.
  - o **BootP** — Gets IP address from a BootP server.
  - o **DHCP** — Gets IP address from a DHCP server.

Press <Ctrl><w> to save any changes made. Press <ESC> and select **Reset** to reboot the system.

 **NOTE:** You must reboot the system from the **System Manager/Reset** page for the changes to take effect.

See "[Installation](#)" for more information on installation.

```
Tera Term - 192.168.73.42 VT
File Edit Setup Control Window Help
PowerConnect 3024RA
System Manager/IP Settings

IP Assignment Mode: Manual
IP Address: 192.168.73.42
Network Mask: 255.255.240.0
Default Gateway: 192.168.69.250

-----
Hit <Space> to select Manual, BootP, or DHCP
<ESC> Back <Ctrl-L> Refresh <Ctrl-W> Save
```

## Security Admin

- 1 **User Authentication Mode** — Selects the authentication or authentication sequence required.
  - o **Local Only** — The switch authenticates the user.
  - o **Local then Remote** — The switch attempts to authenticate the user first, and then a RADIUS server attempts to authenticate the user.
  - o **Remote then Local** — A RADIUS server attempts to authenticate the user first, and then the switch attempts to authenticate the user.
  - o **Remote Only** — A RADIUS server authenticates the user.
- 1 **RADIUS Server IP Address** — Identifies the IP address of the RADIUS server.
- 1 **RADIUS Shared Secret** — Specifies the text string that is shared between the switch and the RADIUS server.
- 1 **IP Filtering** — Allows up to 16 IP addresses to access the switch management function, if enabled.
- 1 **Password Admin** — Enables or disables password protection.
- 1 **Allowed IP Addresses** — You can enter up to 16 IP addresses in the Allowed IP Address table.
- 1 **Disable Telnet/Web Access (Console Only)** — Provides an option to enable or disable Telnet or Web access to the switch.

 **NOTE:** The default password is `switch`.

```
Tera Term - COM2 VT
File Edit Setup Control Window Help
PowerConnect 3024RA
System Manager/Security Admin

Telnet Access is: Enabled
Web Access is: Enabled

Password Protection is: Disabled
User Authentication Mode: Local Only
RADIUS Server IP Address: 0.0.0.0
RADIUS Shared Secret:

New Password:
Verify Password:

IP Filtering: More...

-----
Hit <Space> to Enable or Disable Telnet Access
<ESC> Back <Ctrl-L> Refresh <Ctrl-W> Save
```





## Configuration

- 1 To save the switch's current configuration file to a server, supply the TFTP server IP address and configuration filename, and then select **Transfer Configuration File to Server**. To load a configuration file from a server, supply the TFTP server IP address and configuration filename, and then select **Transfer Configuration File from Server**.
- 1 To restore the preinstalled configuration, select **Restore**.
- 1 **TFTP Server IP Address** — Inserts the TFTP Server IP Address to save or load.
- 1 **TFTP Path/Configuration Filename** — Inserts the TFTP Path and configuration filename to save or load.
- 1 **Transfer Configuration File to Server**— Saves the switch configuration file to a server.
- 1 **Transfer Configuration File from Server** — Loads a configuration file from a server to the switch.
- 1 **Restore** — Restores preinstalled default settings.





## Firmware Upgrade

From the **Firmware Upgrade** screen, you can configure the system to download a new version of the management software. You can also set the system to use the new software without overwriting the previous version. See "[Software Upgrades](#)" for more information about this process.

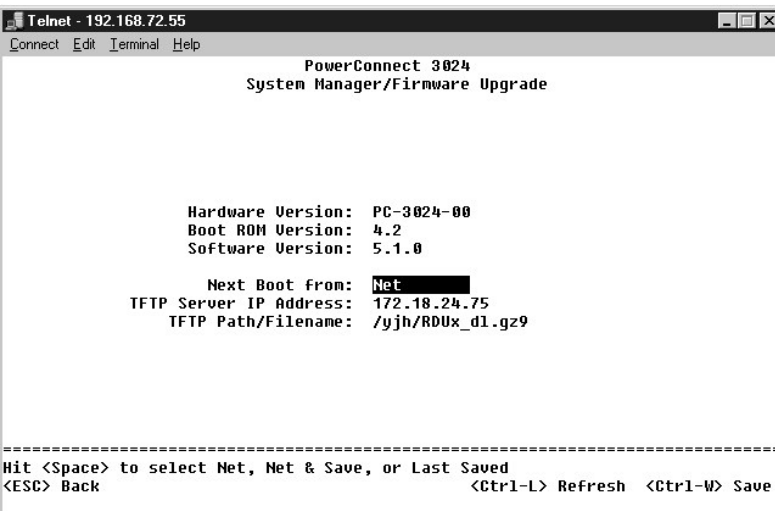
The **Firmware Upgrade** screen contains the following information:

- 1 Current Hardware Version
- 1 Current Boot ROM Version
- 1 Current Software Version

It also contains the following editable fields:

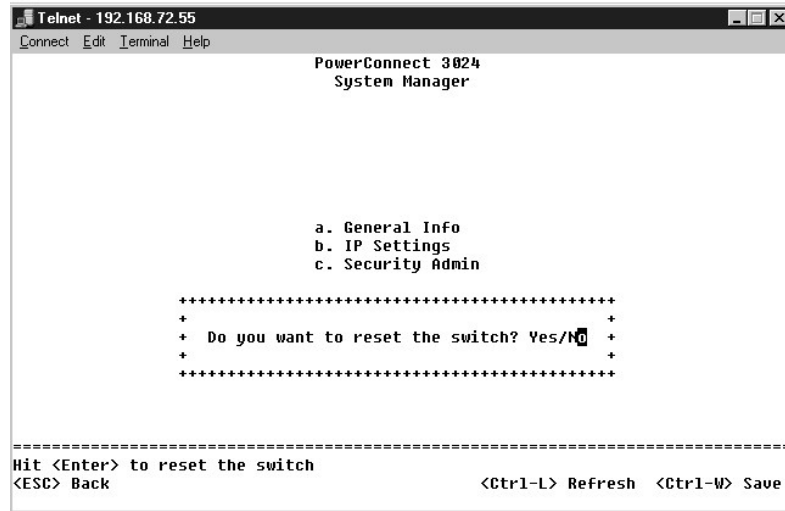
- 1 **Next Boot from** — to indicate the location of the software version you want to run. The following options are available:
  - o **Net** — This is the default setting. Use this option to try out a new version of the software before upgrading. This option runs the software from an internet location you specify. You must also complete the **TFTP Server IP Address** and **TFTP Path/Filename** fields.
  - o **Net & save** — This option overwrites the current version of the software with the downloaded file. You must also complete the **TFTP Server IP Address** and **TFTP Path/Filename** fields.
  - o **Last Saved** — This option automatically shows up after the **Net & save** option is selected and the system is reset.
- 1 **TFTP Server IP Address** — to indicate the server from which the system must retrieve the new version of the software.
- 1 **TFTP Path/Filename** — to indicate the path and name of the software file to download.

➡ **NOTICE:** For changes to persist beyond the current session, you must save the new configuration from the **Save Configuration** page. You must reboot the system from the **System Manager/Reset** page to start the firmware upgrade.



## Reset

If you make any changes to the system through the console interface, you must save the changes in the **Save Configuration** screen. Once you save changes in this screen, you must go to the **Reset** screen and select the **Reset** menu option to reboot the system before the changes can take effect.



```
Telnet - 192.168.72.55
Connect Edit Terminal Help

PowerConnect 3024
System Manager

a. General Info
b. IP Settings
c. Security Admin

*****
+
+ Do you want to reset the switch? Yes/No
+
+
*****

-----
Hit <Enter> to reset the switch
<ESC> Back                               <Ctrl-L> Refresh <Ctrl-W> Save
```

## Port Manager

You can arrange the port characteristics related to link operations. To change settings for any parameter on this page, select the current value and press the space bar. This toggles between the available values for the parameter.

For each port number listed under the **Port** column, you can change the following parameters listed by column name on the screen:

- 1 **Admin** — allows you to enable or disable the port.
- 1 **Data Rate** — allows you to select the speed at which the port operates. The choices are **10Mbps**, **100Mbps**, **1000Mbps**, and **Auto**, which automatically determines and negotiates with the speed of the attached device.
- 1 **Duplex** — offers the choice of **Full**, **Half**, or **Auto**, which automatically detects the value of the attached device and sets the port duplex mode accordingly.
- 1 **Flow Control** — if enabled, stops the sender from sending data until the receiver can accept it.
- 1 **Comments** — allows you to name the port or make comments.

To enable a GBIC module instead of the built-in 10/100/1000BASE-T port for a Gigabit Ethernet uplink, navigate to the desired port number and press the spacebar to enable the GBIC module.

➡ **NOTICE:** Enabling the GBIC port disables the associated built-in 10/100/1000BASE-T port.

```

Telnet - 192.168.72.55
Connect Edit Terminal Help

PowerConnect 3824
Port Manager

Unit 1 2 3 4 5 6

Port Link Admin State Rate/Duplex Flow Ctrl Comments
-----
1 Up Enabled Forwarding (100 Full) (Enabled ) Not Defined
2 Up Enabled Forwarding (100 Full) (Enabled ) Not Defined
3 Up Enabled Forwarding (100 Full) (Enabled ) Not Defined
4 Down Enabled Blocking (Auto ) (Auto ) Not Defined
5 Down Enabled Blocking (Auto ) (Auto ) Not Defined
6 Up Enabled Forwarding (100 Full) (Enabled ) Not Defined
7 Up Enabled Forwarding (100 Full) (Enabled ) Not Defined
8 Down Enabled Blocking (Auto ) (Auto ) Not Defined
9 Down Enabled Blocking (Auto ) (Auto ) Not Defined
10 Up Enabled Forwarding (100 Full) (Enabled ) Not Defined
11 Up Enabled Forwarding (100 Full) (Enabled ) Not Defined
12 Down Enabled Blocking (Auto ) (Auto ) Not Defined
13 Up Enabled Forwarding (100 Full) (Enabled ) Not Defined
14 Down Enabled Blocking (Auto ) (Auto ) Not Defined
15 Down Enabled Blocking (Auto ) (Auto ) Not Defined
16 Up Enabled Forwarding (100 Full) (Enabled ) Not Defined
=====
<ESC> Back <Ctrl-L> Refresh <Ctrl-W> Save

```

### Address Manager

The Address Manager screen includes the following options:

- 1 Static Addresses
- 1 Dynamic Addresses
- 1 Address Aging

```

Telnet - 192.168.72.55
Connect Edit Terminal Help

PowerConnect 3824
Address Manager

a. Static Addresses
b. Dynamic Addresses
c. Address Aging

Hit <Enter> to configure Static Bridge Table
<ESC> Back <Ctrl-L> Refresh <Ctrl-W> Save

```

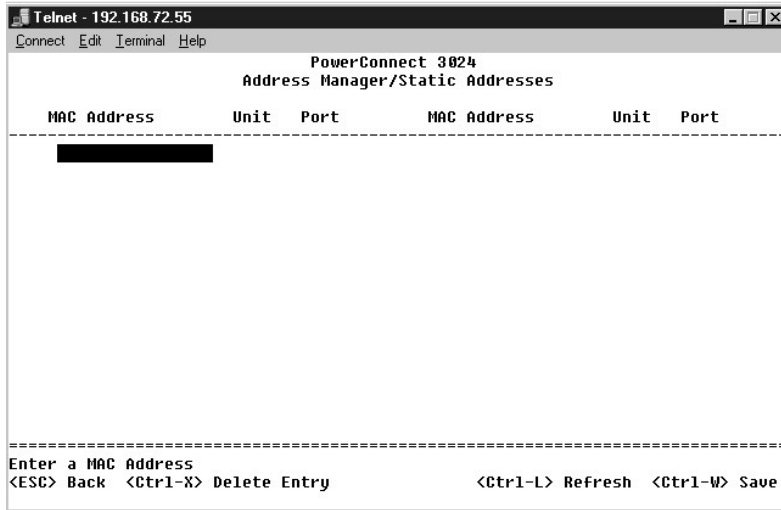
### Static Addresses

From the **Static Addresses** screen, you can specify the MAC address and port number of systems that are to remain available to the switch for an indeterminate amount of time.

The following information is required to add a static MAC address:

- 1 **Address** — to enter the MAC address of a system you want to set as static.
- 1 **Port** — to select the port associated with that system.

If all the information is correct, the new entry appears in the screen in order by port ID.



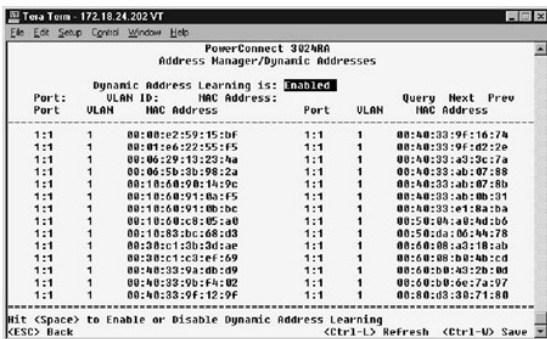
## Dynamic Addresses

The Dynamic Addresses lookup table allows you to view the MAC addresses that are currently in the address database. When addresses are in the database, the packets intended for those addresses are forwarded directly to those ports. You can filter out the table by port, VLAN, and MAC address by checking those fields.

Dynamic MAC address learning is enabled by default. This is the standard mode for a network switch. In some networks, you may want to create a secured network by disabling the dynamic address learning capabilities. When this is done, all current dynamic address entries will be locked in. These addresses will not age out and new addresses will not be learned.

In addition, if a new address is detected on a port, the switch will disable the port with the new address, save the current settings to NVRAM, and send out a Simple Network Management Protocol (SNMP) trap warning. This is useful for locking out systems that attempt to access the network that were not on the network previous to the lockdown. Once a port is automatically disabled, you can reenabel the port manually. The NVRAM will only be saved the first time a given port detects a new address. If the aging time is raised prior to disabling the dynamic address learning, it will allow enough time for all current MAC address to be learned by the switch without the possibility of aging out.

**NOTE:** The console interface can display up to 28 address entries. To see more than 28 entries, use the web interface.



## Address Aging

In the **Address Aging** screen, you can specify how long an address stays available to the switch if it is not configured as static.

The following field is available:

- 1 **Aging Time** — sets the time before an address is purged from system. You can change this value to any number between 10 and 1,000,000 seconds.

```
Telnet - 192.168.72.55
Connect Edit Terminal Help
PowerConnect 3024
Address Manager/Address Aging

Aging Time: 300 (10 - 1000000 seconds)

-----
Enter an Aging Time in Seconds
<ESC> Back <Ctrl-L> Refresh <Ctrl-W> Save
```

## Spanning Tree

The **Spanning Tree** screen includes the following options:

- 1 Bridge Settings
- 1 Port Settings

```
Telnet - 192.168.72.55
Connect Edit Terminal Help
PowerConnect 3024
Spanning Tree

a. Bridge Settings
b. Port Settings

-----
Hit <Enter> to edit the bridge settings
<ESC> Back <Ctrl-L> Refresh <Ctrl-W> Save
```

## Bridge Settings

From the **Bridge Settings** screen, you can enable and configure the spanning tree. The following options are available:

- 1 **Enable** — turns the spanning tree on. If you enable the spanning tree, you must complete the following fields:
  - o **Hello Time** — sets the interval between configuration messages sent by the spanning tree protocol.
  - o **Max Age** — sets the amount of time before the system discards a configuration message.
  - o **Forward Delay** — sets the amount of time the system spends in *learning* and *listening* states.
  - o **Bridge Priority** — sets the priority setting among other switches in the spanning tree.
- 1 **Disable** — disables the spanning tree protocol on the system.

```

Telnet - 192.168.72.55
Connect Edit Terminal Help

PowerConnect 3024
Spanning Tree/Bridge Settings

Root Port: Unit: 1 Port: 17
Root Port Path Cost: 19
Bridge Hello Time: 2
Bridge Max Age: 20
Bridge Forward Delay: 15
Root Bridge Priority: 32768
Root MAC Address: 00:10:14:d5:28:00
Switch MAC Address: 00:40:33:72:05:00

Spanning Tree is: Enabled

Hello Time: 2 (1 - 10 seconds)
Max Age: 20 (6 - 40 seconds)
Forward Delay: 15 (4 - 30 seconds)
Bridge Priority: 32768 (0 - 65535)


=====
Hit <Space> to Enable or Disable the Spanning Tree
<ESC> Back <Ctrl-L> Refresh <Ctrl-W> Save

```

## Port Settings

In the **Port Settings** screen, you can specify spanning tree parameters for each port. This screen is in a table format. For each port number listed under the **Port** column, the following fields are available:

- Priority** — Priority assigned to this port for the Spanning Tree Protocol (0 - 255). A port with a higher priority is less likely to be blocked if the Spanning Tree Protocol is detecting network loops. Low numeric value indicates a high priority.
- Cost** — Cost assigned to this port for the Spanning Tree Protocol (1-65536). A port with a lower cost is less likely to be blocked if the Spanning Tree Protocol is detecting network loops.
- Fast Link** — Fast Link immediately enables the port in forwarding state when a link comes up. The port is not part of the Spanning Tree at that time, but will participate in future Spanning Tree Resolutions.

 **NOTE:** This option is useful if a device is connected to a port that requires network access immediately when the link comes up and cannot wait for a Spanning Tree resolution.

```

Telnet - 192.168.72.55
Connect Edit Terminal Help

PowerConnect 3024
Spanning Tree/Port Settings

Unit 1 2 3 4 5 6
Port Prty Cost FastLink Port Prty Cost FastLink Port Prty Cost FastLink
1 128 19 Disabled 17 128 19 Disabled
2 128 19 Disabled 18 128 19 Disabled
3 128 19 Disabled 19 128 19 Disabled
4 128 19 Disabled 20 128 19 Disabled
5 128 19 Disabled 21 128 19 Disabled
6 128 19 Disabled 22 128 19 Disabled
7 128 19 Disabled 23 128 19 Disabled
8 128 19 Disabled 24 128 19 Disabled
9 128 19 Disabled 25GT 128 4 Disabled
10 128 19 Disabled 26GT 128 4 Disabled
11 128 19 Disabled
12 128 19 Disabled
13 128 19 Disabled
14 128 19 Disabled
15 128 19 Disabled
16 128 19 Disabled

=====
<ESC> Back <Ctrl-L> Refresh <Ctrl-W> Save

```

## VLAN and CoS Setup

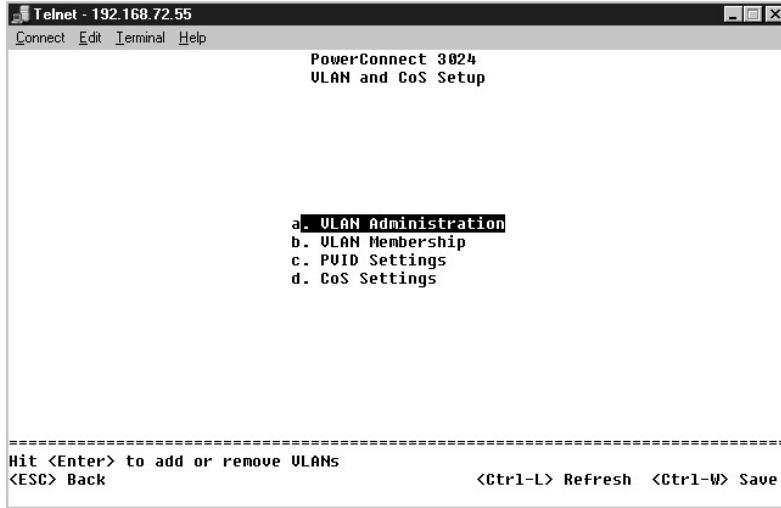
From the **VLAN Management** menu, you can configure up to 64 802.1Q VLANs.

VLANs allows PCs, workstations, and other resources, including printers and file servers, to be organized into logical, broadcast domains so that only devices within the same domain can communicate with each other.

The **VLAN Management** screen shows the information regarding all configured VLANs. All ports of the switch are configured as untagged members in VLAN 1 with VLAN ID 1 by default. Users can create VLANs, delete VLANs, or reset the VLAN configuration back to default in this menu.

The **VLAN Setup** screen includes the following options:

- 1 VLAN Administration
- 1 VLAN Membership
- 1 PVID Settings
- 1 CoS Settings
- 1 Layer 3 Priority — DiffServ



## VLAN Administration

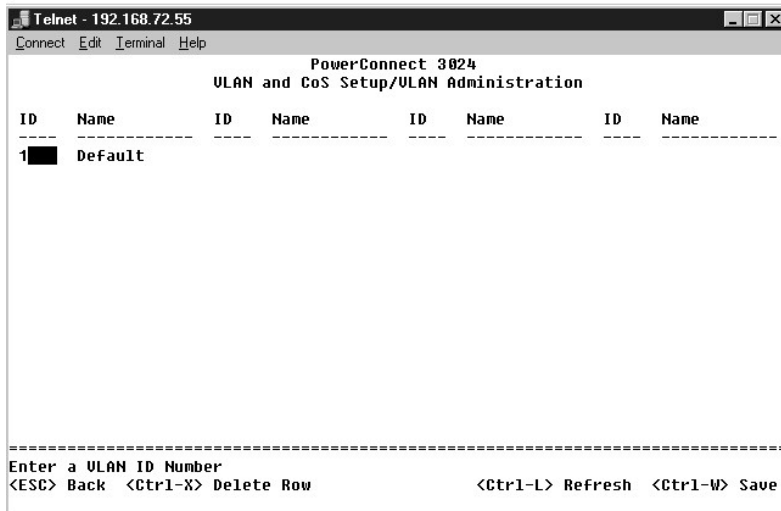
You can add up to 64 VLANs with unique ID numbers and names. VLAN ID numbers must be in the range of 1 to 4094.

### Add a VLAN

- 1 Type a unique numeric VLAN ID and press <Enter>.
- 1 Type a unique VLAN name and press <Enter>.

### Remove a port or an entire VLAN

To remove an entire VLAN, just press <Ctrl><x> anywhere on that line.



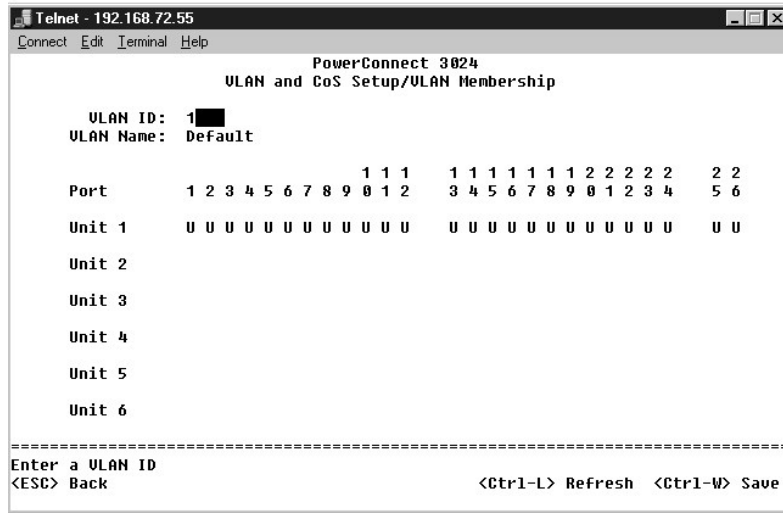


## VLAN Membership

This matrix allows for real-time management of up to 64 VLANs. To add a port to a VLAN, position the cursor in the desired matrix location and toggle the options with the space bar.

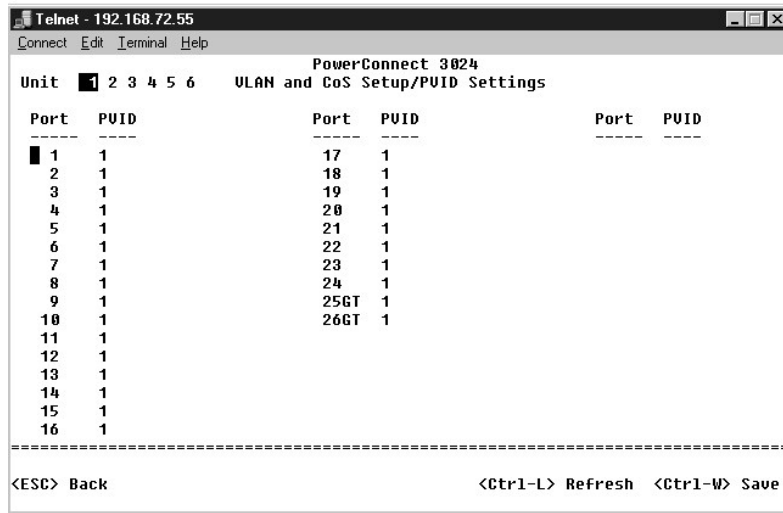
- 1 <U>: Port is a member of the VLAN. All packets transmitted by the port will be untagged, i.e., not carry a tag and therefore not carry VLAN or CoS information.
- 1 <T>: Port is a member of the VLAN. All packets transmitted by the port will be tagged, i.e., carry a tag and therefore carry VLAN or CoS information.
- 1 <BLANK>: Port is not a member of the VLAN. Packets associated with this VLAN will not be transmitted by the port.

The VLAN tagging option is a standard set by the IEEE to facilitate the spanning of VLANs across multiple switches. For more information, see the ["Appendix"](#) and IEEE Std 802.1Q-1998 Virtual Bridged Local Area Networks.



## PVID Settings

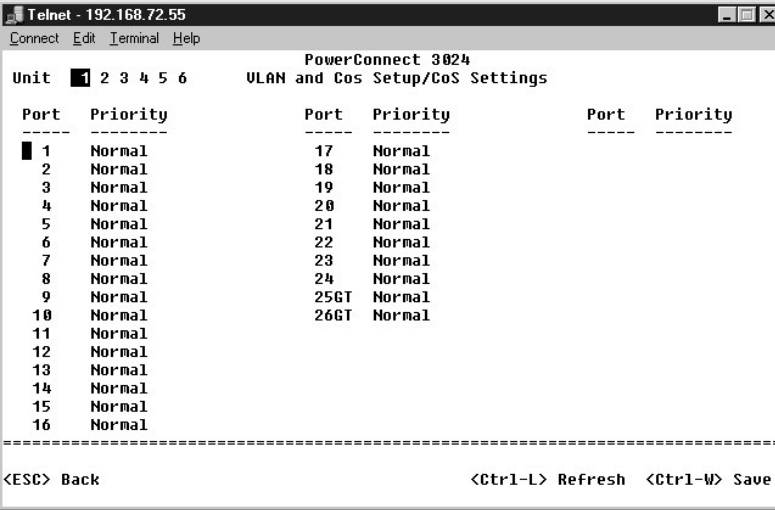
In the **Port VLAN ID Setup** screen, you can specify the PVID for each port on your switch. All untagged packets entering the switch are tagged by default with the ID specified by the port's PVID.



## CoS Settings

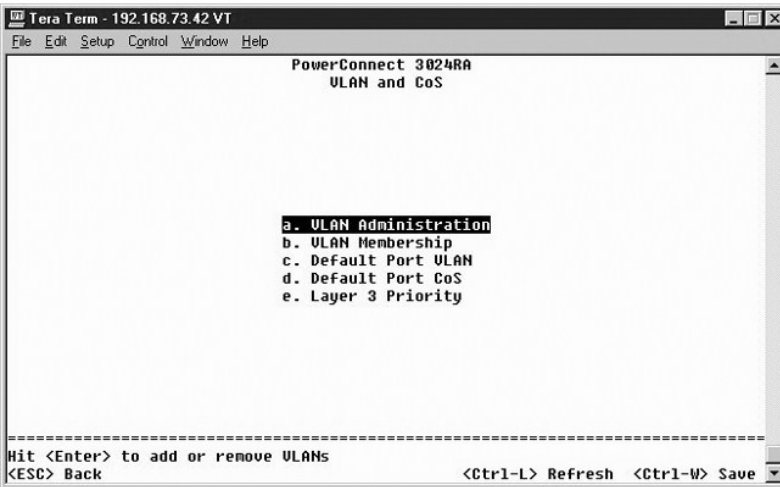
Port Priority allows the user to specify which ports have greater precedence in situations where traffic may be buffered in the switch due to congestion. The ports with a setting of "high" will transmit their packets before those with a "normal" setting. The settings on this page only affect ingress packets that are not already tagged for priority. To raise the priority of a given port, switch the port's setting from "normal" to "high". The default and normal setting for a port is "normal".

In the **CoS Settings** screen, you can specify the priority for each port on your switch.



### Layer 3 Priority – DiffServ

- 1 DiffServ — You can change the default ToS priority by selecting **Normal Priority** or **High Priority** for each class of services. This setting leverages the IETF definition of the IPv4 Type of Service (ToS) octet in the IP packet-header by using the Differentiated Services Code.
- 1 Point (DSCP) field(6 bits) classifies packets into any of the 64 possible classes.



```

Tera Term - 192.168.73.42 VT
File Edit Setup Control Window Help
PowerConnect 3024RA
ULAN and CoS/Layer 3 Priority
-----
DSCP      Prty      DSCP      Prty      DSCP      Prty      DSCP      Prty
-----
000000(0) Normal  010000(16) Normal  100000(32) Normal  110000(48) Normal
000001(1) Normal  010001(17) Normal  100001(33) Normal  110001(49) Normal
000010(2) Normal  010010(18) Normal  100010(34) Normal  110010(50) Normal
000011(3) Normal  010011(19) Normal  100011(35) Normal  110011(51) Normal
000100(4) Normal  010100(20) Normal  100100(36) Normal  110100(52) Normal
000101(5) Normal  010101(21) Normal  100101(37) Normal  110101(53) Normal
000110(6) Normal  010110(22) Normal  100110(38) Normal  110110(54) Normal
000111(7) Normal  010111(23) Normal  100111(39) Normal  110111(55) Normal
001000(8) Normal  011000(24) Normal  101000(40) Normal  111000(56) Normal
001001(9) Normal  011001(25) Normal  101001(41) Normal  111001(57) Normal
001010(10) Normal  011010(26) Normal  101010(42) Normal  111010(58) Normal
001011(11) Normal  011011(27) Normal  101011(43) Normal  111011(59) Normal
001100(12) Normal  011100(28) Normal  101100(44) Normal  111100(60) Normal
001101(13) Normal  011101(29) Normal  101101(45) Normal  111101(61) Normal
001110(14) Normal  011110(30) Normal  101110(46) Normal  111110(62) Normal
001111(15) Normal  011111(31) Normal  101111(47) Normal  111111(63) Normal
-----
Hit <Space> to select: Normal or High
<ESC> Back                               <Ctrl-L> Refresh <Ctrl-W> Save

```

### Port Trunking

In the **Port Trunking** page, you can create multiple links between switches that work as one virtual, aggregate link. You can create four trunks at a time, with each trunk containing up to eight ports. Only ports of the same speed can belong to a single trunk: 10/100 Fast Ethernet ports and Gigabit Ethernet ports cannot be in the same trunk.

- ➔ **NOTICE:** Fast Ethernet trunks can only include ports from a single eight-port cluster: Ports 1 to 8, ports 9 to 16, or ports 17 to 24.
- ➔ **NOTICE:** Built-in 10/100/1000BASE-T ports cannot be trunked with GBIC ports.

To add a port to a trunk, click the toggle button below the port number until the correct trunk number appears.

Use the arrow keys to navigate to the port and trunk intersection that you want to edit. Press the spacebar to enable or disable trunking for the port and trunk you want.

- ➔ **NOTICE:** All ports participating in a trunk must be operating in Full Duplex mode.
- ➔ **NOTICE:** All ports participating in a trunk should have the same VLAN and CoS settings.

```

Telnet - 192.168.72.55
Connect Edit Terminal Help
PowerConnect 3024
Port Trunking

Unit: 1

Port      1 2 3 4 5 6 7 8 9 0 1 2  3 4 5 6 7 8 9 0 1 2 3 4  5 6
Trunk 1   - - - - - - - - - - - - - - - - - - - - - - - - - - - -
Trunk 2   - - - - - - - - - - - - - - - - - - - - - - - - - - - -
Trunk 3   - - - - - - - - - - - - - - - - - - - - - - - - - - - -
Trunk 4   - - - - - - - - - - - - - - - - - - - - - - - - - - - -

-----
Enter a Unit ID
<ESC> Back                               <Ctrl-L> Refresh <Ctrl-W> Save

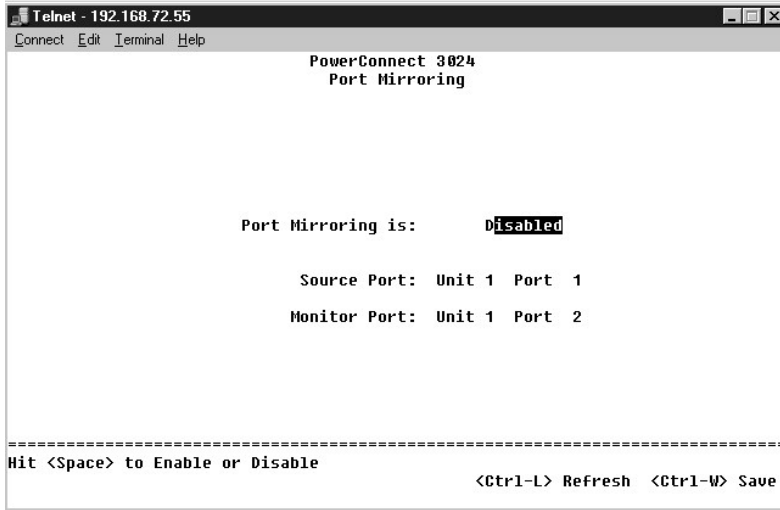
```

### Port Mirroring

From the **Port Mirroring** menu, you can monitor traffic on a specific port. The switch can monitor only single direction traffic, either transmission or reception. When port mirroring is enabled, all the transmission or receiving traffic of the mirrored port is forwarded to the mirroring port.

The following options are available:

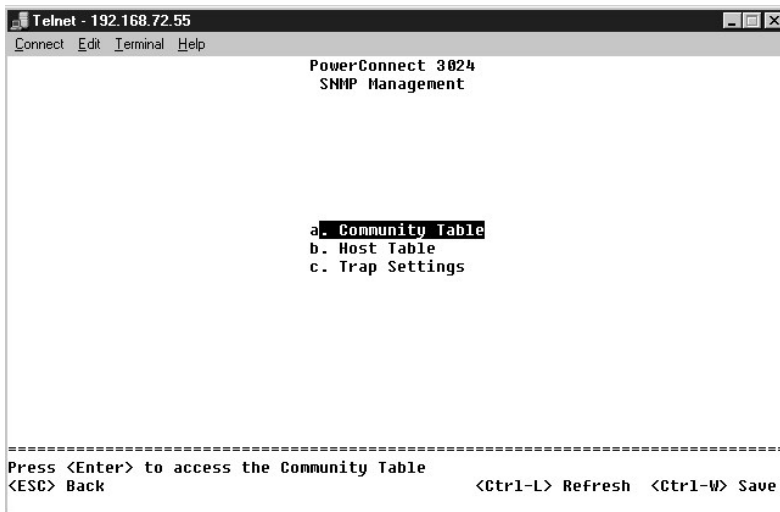
- 1 **Port Mirroring** — Enables or disables port mirroring.
- 1 **Source Port** — Port from which all traffic will be mirrored to the monitor port.
- 1 **Monitor Port** — Port that receives a copy of all traffic that the source port receives.



## SNMP Management

The **SNMP** menu includes the following options:

- 1 **Community Table**
- 1 **Host Table**
- 1 **Trap Settings**

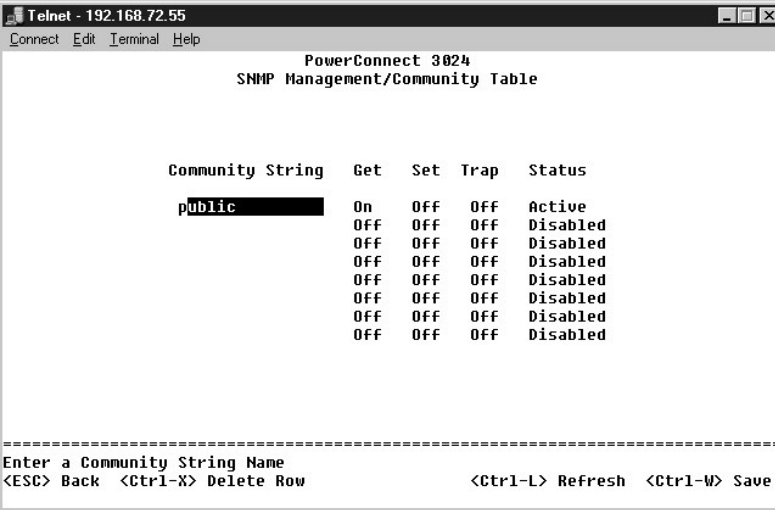


## Community Table

In the **Community Table** page, you can create different communities and customize access. The public string has Get privileges by default.

The following options are available:

- 1 **Community Name** — Type the name of the community you want to create.
- 1 **Get** — Allows read access to the switch's SNMP information for members of the SNMP community.
- 1 **Set** — Allows write access to the switch's SNMP information for members of the SNMP community.
- 1 **Trap** — Allows members of the SNMP community to receive SNMP traps.



## Host Table

From the **SNMP Host Table** page, you can add and remove hosts from access rights that have been granted to community groups. The permissions GET, SET, and TRAP are assigned to a community name and then these permissions are assigned to individual machines by adding those machines and their IP addresses to the appropriate community string. Host authorization can be enabled or disabled.

If the host authorization is disabled (the default setting), the switch allows any SNMP manager to access the switch. If the host authorization is enabled, the administrator can specify up to 16 SNMP managers on the host table that can access the switch.

You must enable host authorization before you can use the host table. Host authorization is a security feature to limit people who are not listed in the host table from accessing the switch.

Once you have enabled host authorization, you must add the host to this table through the console port connection. Otherwise, the switch cannot access the end station using SNMP.

## Add host

- 1. Enter the host name, IP address, and the community string. Press <Enter> after each entry to move to the next field.
- 2. In the **Status** field, press the spacebar until the desired status is displayed.
- 3. Press <Ctrl><w> to save all changes.

```
Tera Term - 192.168.73.42 VT
File Edit Setup Control Window Help
PowerConnect 3024RA
SNMP/Host Table
Host Authorization is: Disabled
Host Name      IP Address      Community String      Status
1
2
3
4
5
6
7
8
9
10
11
12
13
14
15
16
-----
Hit <Space> to Enable or Disable Host Authorization
<ESC> Back <Ctrl-X> Delete Row <Ctrl-L> Refresh <Ctrl-W> Save
```

### Trap Settings

The SNMP Trap Setting allows for the setup of authentication traps. The following options are available:

- 1 Authentication Trap
  - o Enabled — The system generates an SNMP trap upon a host authorization failure.
  - o Disabled — The system does not generate authentication traps.

All hosts in community strings with trap privileges are notified when a trap condition occurs.

```
Telnet - 192.168.72.55
Connect Edit Terminal Help
PowerConnect 3024
SNMP Management/Trap Settings
Authentication Traps are: Enabled
-----
Hit <Space> to Enable or Disable Authentication Traps
<ESC> Back <Ctrl-L> Refresh <Ctrl-W> Save
```

### Multimedia Support

There are two settings available from this page: IGMP and High Priority Optimization.

```
Telnet - 192.168.72.55
Connect Edit Terminal Help

PowerConnect 3024
Multimedia Support

IGMP is: Disabled
High Priority Optimization is: Disabled

-----
Hit <Space> to Enable or Disable
<Ctrl-L> Refresh <Ctrl-W> Save
```

## IGMP

With IGMP (Internet Group Management Protocol) Snooping, you can configure the switch to forward multicast traffic intelligently. Based on the IGMP query and report messages, the switch forwards traffic only to the ports that request multicast traffic. This prevents the switch from broadcasting the traffic to all ports and possibly disrupting network performance.

**NOTE:** IGMP requires a router that learns about the presence of multicast groups on its subnets and keeps track of group membership.

The IGMP option can be set as follows:

- 1 **Enabled** — The system detects IGMP queries and report packets and manages IP multicast traffic through the switch.
- 1 **Disabled** — The switch forwards traffic and ignores any IGMP requests.

```
Telnet - 192.168.73.7
Connect Edit Terminal Help

PowerConnect 3024
IGMP Management

IGMP is: Disabled

-----
Hit <Space> to Enable or Disable
<Ctrl-L> Refresh <Ctrl-D> Logoff
```

## High-Priority Optimization

**NOTICE:** Enabling high-priority optimization can effectively disable flow-control for normal-priority packets.

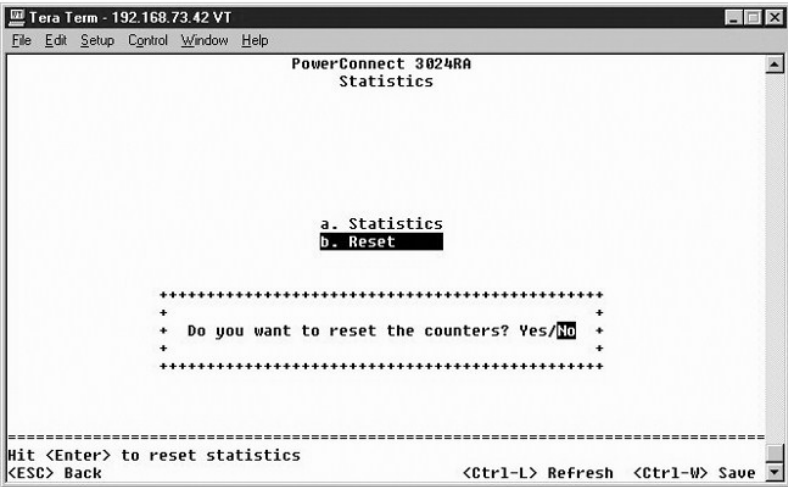
The High-Priority Optimization setting implements a priority-based head-of-line blocking prevention algorithm in the system. This algorithm ensures that in the case of traffic congestion, normal priority packets do not hold up high priority packets.

**NOTE:** Enabling high priority optimization can improve overall system performance for networks with time-sensitive, prioritized traffic; for example, the traffic associated with multimedia streaming, teleconferencing, or telephony applications.

# Statistics

To view the statistics, select **Statistics** and hit the **Enter** key. Select **Reset** to reset the statistics settings.

 **NOTE:** Counters are cumulative from the last time the system was booted.



[Back to Contents Page](#)



## Software Upgrades

### Dell™ PowerConnect™ 3024 Systems User's Guide

## Upgrade Procedure

The application software is field upgradable. The new software must reside on a TFTP server that can be accessed by the switch.

Before you upgrade the firmware, ensure that Port Trunking is disabled.

1. Write down the current Port Trunking configurations.
2. Unplug all but one port from each of the trunks.
3. Delete all trunks through the management interface.
4. Save all configurations to NVRAM.
5. Reset the switch to perform the firmware upgrade.

To upgrade the software, you must go to the **Firmware Upgrade** screen. Complete the following steps:

1. Go to **System Manager/Firmware Upgrade** (in the Web or console interface).
2. Under **Boot from field**, choose **Net** during the normal operation.

This setting allows you to try out a new version of the software before upgrading. This option runs the software from an internet location you specify in [step 3](#).

3. Verify information such as the IP address for the TFTP Server, Gateway IP address, and the new image filename and path.
4. Click **Apply** in the Web interface or press <Ctrl><w> in the console interface.
5. Go to the **Reset** screen and restart the system.

The boot routine retrieves the new image then passes control to it. The system executes the new image.

6. If you decide to upgrade to the new image, go to the **Firmware Upgrade** screen again. Set the **Boot from** field to **Net & Save** and click **Apply** in the Web interface, or press <Ctrl><w> in the console interface.
7. Go to the **Reset** screen and restart the system.

The boot routine retrieves the new image then passes control to it. The system executes the new image. The new version overwrites the old one.

8. Verify that the software has been upgraded by going to the **Firmware Upgrade** screen and checking the software release information.

If the older version of the software has not been replaced, the system was unable to reach the new software and executed from the previous version.



**NOTE:** Perform the upgrade procedure from the console interface via an RS232 serial port. When using a telnet session or web interface alone, your connection to the switch is not available until the switch has entered forwarding mode. This takes approximately three minutes.

## Appendix

### Dell™ PowerConnect™ 3024 Systems User's Guide


- [VLAN Description](#)
- [VLAN Examples](#)
- [Troubleshooting](#)
- [Technical Specifications](#)
- [Technical Assistance](#)
- [Problems With Your Order](#)
- [Product Information](#)
- [Returning Items for Warranty Repair or Credit](#)
- [Before You Call](#)
- [Contacting Dell](#)
- [Regulatory Notices](#)

---

## VLAN Description

Packets received by the switch are treated in the following ways:

- 1 When an untagged packet enters a port, the system automatically tags it with the port's default VLAN ID tag number. Each port has a default VLAN ID setting that is user configurable. The default setting is 1. You can change the default VLAN ID setting for each port from the **Port Manager** screen.
- 1 When a tagged packet enters a port, the default VLAN ID setting has no effect on the tag.
  - o The packet proceeds to the VLAN specified by its VLAN ID tag number.
  - o If the port in which the packet entered does not belong to the VLAN specified by the packet's VLAN ID tag, the system drops the packet.
  - o If the port belongs to the VLAN specified by the packet's VLAN ID, the system can send the packet to other ports with the same VLAN ID.

 **NOTE:** You can change port VLAN membership settings in the **VLAN Membership** screen.

- 1 Packets leaving the switch are either tagged or untagged depending on that port's membership properties.
- 1 A **U** for a given port and VLAN means that packets leaving the switch from that port and VLAN are untagged. A **T** for a given port and VLAN means that packets leaving the switch from that port and VLAN are tagged with the respective ID for the VLAN to which that port belongs.

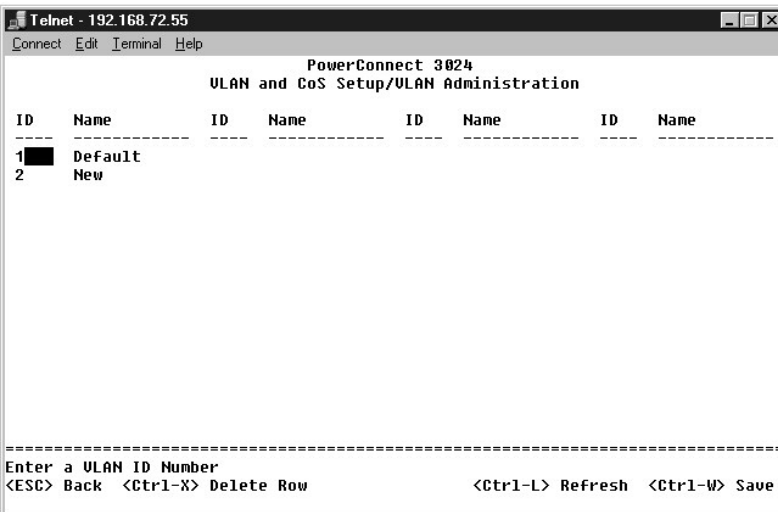
---

## VLAN Examples

In the following two examples, example 1 steps through a simple two-group VLAN setup. Example 2 steps through a more elaborate setup illustrating all possible scenarios for a comprehensive understanding of tagged VLANs.

### Example 1

1. In the **VLAN Administration** page, add a new VLAN to the list, shown in the following illustration as New with a VLAN ID value of 2.



In the **VLAN Membership** page, use the space bar to toggle the matrix until the desired ports are all members of the selected VLAN.

```

Telnet - 192.168.72.55
Connect Edit Terminal Help
PowerConnect 3024
ULAN and CoS Setup/ULAN Membership

  ULAN ID: 1
  ULAN Name: Default

Port      1 2 3 4 5 6 7 8 9 0 1 2    1 1 1 1 1 1 1 2 2 2 2 2 2 2 2 2
Unit 1    U U U U - - - - - - - - - - - - - - - - - - - - - -
Unit 2    - - - - - - - - - - - - - - - - - - - - - -
Unit 3
Unit 4
Unit 5
Unit 6

-----
Enter a ULAN ID
<ESC> Back                                <Ctrl-L> Refresh <Ctrl-W> Save

```

```

Telnet - 192.168.72.55
Connect Edit Terminal Help
PowerConnect 3024
ULAN and CoS Setup/ULAN Membership

  ULAN ID: 2
  ULAN Name: New

Port      1 2 3 4 5 6 7 8 9 0 1 2    1 1 1 1 1 1 1 2 2 2 2 2 2 2 2 2
Unit 1    - - - - U U U U - - - - - - - - - - - - - - - - - -
Unit 2    - - - - - - - - - - - - - - - - - - - - - -
Unit 3
Unit 4
Unit 5
Unit 6

-----
Hit <Space> to select: (U)ntagged, (T)agged, or ( ) Not a Member
<ESC> Back                                <Ctrl-L> Refresh <Ctrl-W> Save

```

3. To allow untagged packets to participate in the new VLAN, change the Port VLAN IDs for the relevant ports.

```

Telnet - 192.168.72.55
Connect Edit Terminal Help

PowerConnect 3024
Unit 1 2 3 4 5 6  VLAN and CoS Setup/PUID Settings

Port  PUID          Port  PUID          Port  PUID
-----
1     1              17   1              23   1
2     1              18   1              24   1
3     1              19   1              25GT 1
4     1              20   1              26GT 1
5     2              21   1
6     2              22   1
7     2              23   1
8     2              24   1
9     1              25GT 1
10    1              26GT 1
11    1
12    1
13    1
14    1
15    1
16    1

-----
<ESC> Back          <Ctrl-L> Refresh  <Ctrl-W> Save

```

## Example 2

Example 2 steps through a more elaborate setup illustrating all possible scenarios for a comprehensive understanding of tagged VLANs.

1. Set up VLANs as shown in the following illustration:

```

Telnet - 192.168.72.55
Connect Edit Terminal Help

PowerConnect 3024
VLAN and CoS Setup/VLAN Administration

ID  Name          ID  Name          ID  Name          ID  Name
-----
1   Default
5   internal
10  web
15  collocation

-----
Enter a VLAN ID Number
<ESC> Back  <Ctrl-X> Delete Row          <Ctrl-L> Refresh  <Ctrl-W> Save

```

2. Configure VLAN membership: This example includes two VLANs, using stack 1 only.

```

Telnet - 192.168.72.55
Connect Edit Terminal Help

PowerConnect 3024
ULAN and CoS Setup/ULAN Membership

ULAN ID: 1
ULAN Name: Default

Port      1 2 3 4 5 6 7 8 9 0 1 2   1 1 1   1 1 1 1 1 1 1 2 2 2 2 2   2 2
          3 4 5 6 7 8 9 0 1 2   3 4 5 6 7 8 9 0 1 2 3 4   5 6
Unit 1    U U - - - - - - - - - - - - - - - - - - - - - - - -
Unit 2    - - - - - - - - - - - - - - - - - - - - - - - -
Unit 3
Unit 4
Unit 5
Unit 6

-----
Hit <Space> to select: (U)ntagged, (T)agged, or ( ) Not a Member
<ESC> Back                               <Ctrl-L> Refresh <Ctrl-W> Save

```

```

Telnet - 192.168.72.55
Connect Edit Terminal Help

PowerConnect 3024
ULAN and CoS Setup/ULAN Membership

ULAN ID: 5
ULAN Name: internal

Port      1 2 3 4 5 6 7 8 9 0 1 2   1 1 1   1 1 1 1 1 1 1 2 2 2 2 2   2 2
          3 4 5 6 7 8 9 0 1 2   3 4 5 6 7 8 9 0 1 2 3 4   5 6
Unit 1    U - - U U - - - - - - - - - - - - - - - - - - - - - -
Unit 2    - - - - - - - - - - - - - - - - - - - - - - - -
Unit 3
Unit 4
Unit 5
Unit 6

-----
Hit <Space> to select: (U)ntagged, (T)agged, or ( ) Not a Member
<ESC> Back                               <Ctrl-L> Refresh <Ctrl-W> Save

```

```

Telnet - 192.168.72.55
Connect Edit Terminal Help

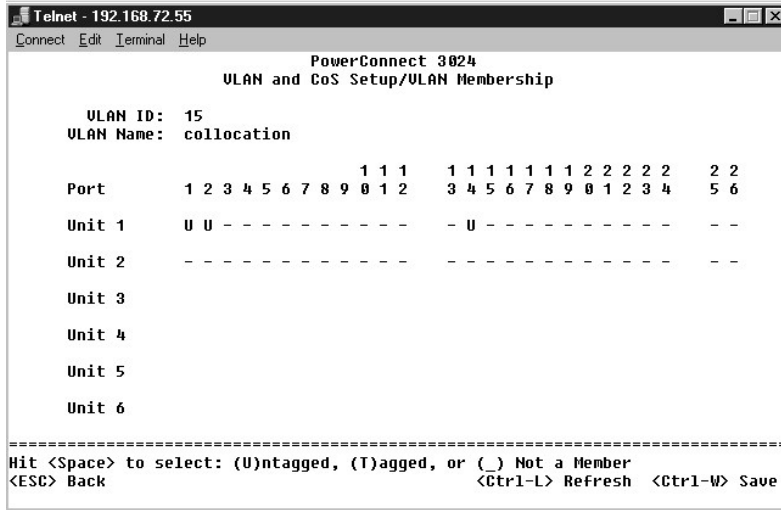
PowerConnect 3024
ULAN and CoS Setup/ULAN Membership

ULAN ID: 10
ULAN Name: web

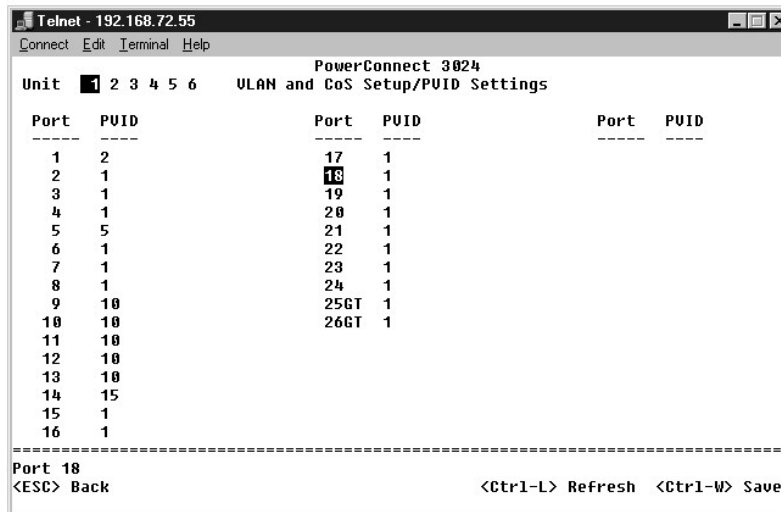
Port      1 2 3 4 5 6 7 8 9 0 1 2   1 1 1   1 1 1 1 1 1 1 2 2 2 2 2   2 2
          3 4 5 6 7 8 9 0 1 2   3 4 5 6 7 8 9 0 1 2 3 4   5 6
Unit 1    T - - - - - - - T T U U - - - - - - - - - - - - - -
Unit 2    - - - - - - - - - - - - - - - - - - - - - - - -
Unit 3
Unit 4
Unit 5
Unit 6

-----
Hit <Space> to select: (U)ntagged, (T)agged, or ( ) Not a Member
<ESC> Back                               <Ctrl-L> Refresh <Ctrl-W> Save

```



3. Set up the Port VLAN IDs as shown in the following illustration:



The specific ports shown in the previous illustration have the following port VLAN ID settings. The port VLAN ID settings for each port are configured in the PVID Settings page:

Port 01: 2	Port 05: 5	Port 09: 10	Port 13: 10
Port 02: 1	Port 06: 1	Port 10: 10	Port 14: 15
Port 03: 1	Port 07: 1	Port 11: 10	Port 15: 1
Port 04: 1	Port 08: 1	Port 12: 10	Port 16: 1

The VLANs set up in the preceding procedure produce results as follows:

- 1 If an untagged packet enters Port 4, the switch tags it with a VLAN tag value of 1. Since Port 4 does not have membership with VLAN ID 1, the default, the system drops the packet.
- 1 If a tagged packet with a VLAN tag value 5 enters Port 4, the packet has access to Ports 3 and 1. If the packet leaves Port 3 and/or 1, it is stripped of its tag as it leaves the switch and becomes an untagged packet.
- 1 If an untagged packet enters Port 1, the switch tags it with a VLAN tag value of 2. It is then dropped since Port 1 has no membership with VLAN ID 2.
- 1 If a tagged packet with a VLAN tag value 10 enters Port 9, it has access to Ports 1, 10, 11, and 12. If the packets leave Port 1 or 10, they are tagged with a VLAN ID value of 10. If the packet leaves Port 11 or 12, it leaves as an untagged packet.
- 1 If a tagged packet with a VLAN tag value 1 enters Port 9, it is dropped since Port 9 does not have membership with VLAN ID 1.

## Troubleshooting

This section explains how to isolate and diagnose problems with the switch. If you have a problem that is not listed here and you can not solve it, please contact your supplier.


### LEDs

The following sections discuss troubleshooting associated with the LEDs:

- 1 All LEDs are off

Check the following:

- o The cable to connect the switch. Ensure that you're using an RJ-45 (network) cable and not an RJ-11 (telephone) cable.
- o Ensure that the power cord is firmly connected to the relevant switch unit and to the supply outlet. If the connection is secure and there is still no power, you may have a faulty power cord.
- o Verify that there is sufficient space for adequate airflow on both sides of the switch.

 **NOTE:** Operating temperature for the switch must not exceed 40 °C. The switch should not be placed in the direct sunlight or near warm air exhausts or heaters.

- 1 On powering-up, the Self-test LED lights orange.
  - o The relevant switch unit has failed its power on Self-test because of an internal problem. See "[Technical Assistance](#)" for more information.

### Ports

The following section discusses troubleshooting associated with ports:

- 1 Port does not work

Check the following:

- o The cable connections are secure and the cables are connected to the correct ports at both ends of the link.
- o The port status is configured at "Enable" and the auto-negotiation feature is enabled at the switch. See "[Port Manager](#)" for more information.

### Interfaces

The following sections discuss troubleshooting related to the switch interfaces:

- 1 The terminal cannot access the switch

Check the following:

- o Your terminal is correctly configured to operate as a VT100 terminal.
- o You are using a proper null modem cable.
- o The settings on your terminal are correct. See "[Installation](#)" for more information.

- 1 The Web browser cannot access the switch

Check the following:

- o The IP information for the switch is correctly configured.
- o The switch is powered-up.

---

## Technical Specifications


Standards	
Ethernet types supported	IEEE 802.3 Type 10Base-T, IEEE 802.3u Type 100 Base-TX, IEEE 802.3z, IEEE 803.ab
Other standards supported	IEEE 802.3x, IEEE 802.1d, IEEE 802.1q, IEEE 802.1p, IEEE 802.3ad
Interfaces	
10/100BASE-T ports	24
10/100/1000BASE-T ports	2
GBIC slots	2
Gigabit stacking ports	2
RS232 connector	1
Indicators	


System LEDs	1
Port LEDs:	
10/100BASE-T ports	2 per port
Gigabit Ethernet ports	3 per port
<b>Power</b>	
Input	100-240VAC 50-60Hz
<b>Physical</b>	
Dimensions	440 mm x 260 mm x 45 mm
<b>Environmental</b>	
Temperature:	
Operating	0° to 40°C
Storage	-20° to 70°
Relative humidity:	
Operating	10% to 90%
Storage	5% to 90%

## Technical Assistance

If you need help with a technical problem, Dell is ready to assist you.


1. Make a copy of the Diagnostics Checklist and fill it out.
2. Use Dell's extensive suite of online services available at Dell | Support ([support.dell.com](http://support.dell.com)) for help with installation and troubleshooting procedures.
3. If the preceding steps have not resolved the problem, contact Dell.

 **NOTE:** Call technical support from a telephone near or at the computer so that technical support can assist you with any necessary procedures.

 **NOTE:** Dell's Express Service Code system may not be available in all countries.

When prompted by Dell's automated telephone system, enter your Express Service Code to route the call directly to the proper support personnel. If you do not have an Express Service Code, open the **Dell Accessories** folder, double-click the **Express Service Code** icon, and follow the directions.

For instructions on using the technical support service, see "[Technical Support Service](#)."

 **NOTE:** Some of the following services are not always available in all locations outside the continental U.S. Call your local Dell representative for information on availability.

## Online Services

You can access Dell Support at [support.dell.com](http://support.dell.com). Select your region on the **WELCOME TO DELL SUPPORT** page, and fill in the requested details to access help tools and information.

You can contact Dell electronically using the following addresses:

- 1 World Wide Web

[www.dell.com/](http://www.dell.com/)

[www.dell.com/ap/](http://www.dell.com/ap/) (for Asian/Pacific countries only)

[www.euro.dell.com](http://www.euro.dell.com) (for Europe only)

[www.dell.com/la/](http://www.dell.com/la/) (for Latin American countries)

- 1 Anonymous file transfer protocol (FTP)

[ftp.dell.com/](ftp://ftp.dell.com/)

Log in as user: `anonymous`, and use your e-mail address as your password.

- 1 Electronic Support Service

[mobile\\_support@us.dell.com](mailto:mobile_support@us.dell.com)

[support@us.dell.com](mailto:support@us.dell.com)

[apsupport@dell.com](mailto:apsupport@dell.com) (for Asian/Pacific countries only)

[support.euro.dell.com](http://support.euro.dell.com) (for Europe only)

- 1 Electronic Quote Service



sales@dell.com

apmarketing@dell.com (for Asian/Pacific countries only)

1 Electronic Information Service

info@dell.com

## AutoTech Service

Dell's automated technical support service—AutoTech—provides recorded answers to the questions most frequently asked by Dell customers about their portable and desktop computers.

When you call AutoTech, use your touch-tone telephone to select the subjects that correspond to your questions.

The AutoTech service is available 24 hours a day, 7 days a week. You can also access this service through the technical support service. For the telephone number to call, see the [contact numbers](#) for your region.

## Automated Order-Status Service

To check on the status of any Dell products that you have ordered, you can go to [support.dell.com](http://support.dell.com), or you can call the automated order-status service. A recording prompts you for the information needed to locate and report on your order. For the telephone number to call, see the [contact numbers](#) for your region.

## Technical Support Service

Dell's technical support service is available 24 hours a day, 7 days a week, to answer your questions about Dell hardware. Our technical support staff uses computer-based diagnostics to provide fast, accurate answers.

To contact Dell's technical support service, see "[Technical Assistance](#)" and then call the number for your country as listed in "[Contacting Dell](#)."

---

## Problems With Your Order

If you have a problem with your order, such as missing parts, wrong parts, or incorrect billing, contact Dell for customer assistance. Have your invoice or packing slip handy when you call. For the telephone number to call, see the [contact numbers](#) for your region.

---

## Product Information

If you need information about additional products available from Dell, or if you would like to place an order, visit the Dell website at [www.dell.com](http://www.dell.com). For the telephone number to call to speak to a sales specialist, see the [contact numbers](#) for your region.

---

## Returning Items for Warranty Repair or Credit

Prepare all items being returned, whether for repair or credit, as follows:

1. Call Dell to obtain a Return Material Authorization Number, and write it clearly and prominently on the outside of the box.

For the telephone number to call, see the [contact numbers](#) for your region.

2. Include a copy of the invoice and a letter describing the reason for the return.
3. Include a copy of the Diagnostics Checklist indicating the tests you have run and any error messages reported by the Dell Diagnostics.
4. Include any accessories that belong with the item(s) being returned (power cables, software floppy disks, guides, and so on) if the return is for credit.
5. Pack the equipment to be returned in the original (or equivalent) packing materials.

You are responsible for paying shipping expenses. You are also responsible for insuring any product returned, and you assume the risk of loss during shipment to Dell. Collect On Delivery (C.O.D.) packages are not accepted.

Returns that are missing any of the preceding requirements will be refused at Dell's receiving dock and returned to you.

---

## Before You Call

 **NOTE:** Have your Express Service Code ready when you call. The code helps Dell's automated-support telephone system direct your call more efficiently.

Remember to fill out the Diagnostics Checklist. If possible, turn on your computer before you call Dell for technical assistance and call from a telephone at or near the computer. You may be asked to type some commands at the keyboard, relay detailed information during operations, or try other troubleshooting steps possible only at the computer itself. Ensure that the computer documentation is available.


Diagnostics Checklist
Name:
Date:
Address:
Phone number:
Service tag (bar code on the back of the computer):
Express Service Code:
Return Material Authorization Number (if provided by Dell support technician):
Switch Name and Firmware Version:
Error message, beep code, or diagnostic code:
Description of problem and troubleshooting procedures you performed:

## Contacting Dell

To contact Dell electronically, you can access the following websites:

- 1 [www.dell.com](http://www.dell.com)
- 1 [support.dell.com](http://support.dell.com) (technical support)
- 1 [premiersupport.dell.com](http://premiersupport.dell.com) (technical support for educational, government, healthcare, and medium/large business customers, including Premier, Platinum, and Gold customers)

For specific web addresses for your country, find the appropriate country section in the table below.

 **NOTE:** Toll-free numbers are for use within the country for which they are listed.

When you need to contact Dell, use the electronic addresses, telephone numbers, and codes provided in the following table. If you need assistance in determining which codes to use, contact a local or an international operator.

Country (City) International Access Code Country Code City Code	Department Name or Service Area, Website and E-Mail Address	Area Codes, Local Numbers, and Toll-Free Numbers
<b>Anguilla</b>	General Support	toll-free: 800-335-0031
<b>Antigua and Barbuda</b>	General Support	1-800-805-5924
<b>Argentina (Buenos Aires)</b>	Website: <a href="http://www.dell.com.ar">www.dell.com.ar</a>	
International Access Code: <b>00</b>	Tech Support and Customer Care	toll-free: 0-800-444-0733
Country Code: <b>54</b>	Sales	0-810-444-3355
City Code: <b>11</b>	Tech Support Fax	11 4515 7139
	Customer Care Fax	11 4515 7138
<b>Aruba</b>	General Support	toll-free: 800-1578
<b>Australia (Sydney)</b>	E-mail (Australia): <a href="mailto:au_tech_support@dell.com">au_tech_support@dell.com</a>	
International Access Code: <b>0011</b>	E-mail (New Zealand): <a href="mailto:nz_tech_support@dell.com">nz_tech_support@dell.com</a>	
Country Code: <b>61</b>	Home and Small Business	1-300-65-55-33
City Code: <b>2</b>	Government and Business	toll-free: 1-800-633-559
	Preferred Accounts Division (PAD)	toll-free: 1-800-060-889
	Customer Care	toll-free: 1-800-819-339
	Corporate Sales	toll-free: 1-800-808-385
	Transaction Sales	toll-free: 1-800-808-312
	Fax	toll-free: 1-800-818-341
<b>Austria (Vienna)</b>	Website: <a href="http://support.euro.dell.com">support.euro.dell.com</a>	
International Access Code: <b>900</b>	E-mail: <a href="mailto:tech_support_central_europe@dell.com">tech_support_central_europe@dell.com</a>	
Country Code: <b>43</b>	Home/Small Business Sales	01 795 67602
City Code: <b>1</b>	Home/Small Business Fax	01 795 67605
	Home/Small Business Customer Care	01 795 67603
	Preferred Accounts/Corporate Customer Care	0660 8056
	Home/Small Business Technical Support	01 795 67604
	Preferred Accounts/Corporate Technical Support	0660 8779
	Switchboard	01 491 04 0
<b>Bahamas</b>	General Support	toll-free: 1-866-278-6818

<b>Barbados</b>	General Support	1-800-534-3066
<b>Belgium (Brussels)</b>	Website: <a href="http://support.euro.dell.com">support.euro.dell.com</a>	
International Access Code: <b>00</b>	E-mail: <a href="mailto:tech_be@dell.com">tech_be@dell.com</a>	
Country Code: <b>32</b>	E-mail for French Speaking Customers: <a href="http://support.euro.dell.com/be/fr/emaildell/">support.euro.dell.com/be/fr/emaildell/</a>	
City Code: <b>2</b>	Technical Support	02 481 92 88
	Customer Care	02 481 91 19
	Home/Small Business Sales	toll-free: 0800 16884
	Corporate Sales	02 481 91 00
	Fax	02 481 92 99
	Switchboard	02 481 91 00
<b>Bermuda</b>	General Support	1-800-342-0671
<b>Bolivia</b>	General Support	toll-free: 800-10-0238
<b>Brazil</b>	Website: <a href="http://www.dell.com/br">www.dell.com/br</a>	
International Access Code: <b>00</b>	Customer Support, Technical Support	0800 90 3355
Country Code: <b>55</b>	Tech Support Fax	51 481 5470
City Code: <b>51</b>	Customer Care Fax	51 481 5480
	Sales	0800 90 3390
<b>British Virgin Islands</b>	General Support	toll-free: 1-866-278-6820
<b>Brunei</b>	Customer Technical Support (Penang, Malaysia)	604 633 4966
Country Code: <b>673</b>	Customer Service (Penang, Malaysia)	604 633 4949
	Transaction Sales (Penang, Malaysia)	604 633 4955
<b>Canada (North York, Ontario)</b>	Automated Order-Status System	toll-free: 1-800-433-9014
International Access Code: <b>011</b>	AutoTech (automated technical support)	toll-free: 1-800-247-9362
	TechFax	toll-free: 1-800-950-1329
	Customer Care (home/small business)	toll-free: 1-800-847-4096
	Customer Care (med./large business, government)	toll-free: 1-800-326-9463
	Technical Support (home/small business)	toll-free: 1-800-847-4096
	Technical Support (med./large bus., government)	toll-free: 1-800-847-4096
	Sales (direct sales—from outside Toronto)	toll-free: 1-800-387-5752
	Sales (direct sales—from within Toronto)	416 758-2200
	Sales (federal government, education, and medical)	toll-free: 1-800-567-7542
<b>Cayman Islands</b>	General Support	1-800-805-7541
<b>Chile (Santiago)</b>	Sales, Customer Support, and Technical Support	toll-free: 1230-020-4823
Country Code: <b>56</b>		
City Code: <b>2</b>		
<b>China (Xiamen)</b>	Tech Support website: <a href="http://support.ap.dell.com/china">support.ap.dell.com/china</a>	
Country Code: <b>86</b>	Tech Support E-mail: <a href="mailto:cn_support@dell.com">cn_support@dell.com</a>	
City Code: <b>592</b>	Tech Support Fax	818 1350
	Home and Small Business Technical Support	toll-free: 800 858 2437
	Corporate Accounts Technical Support	toll-free: 800 858 2333
	Customer Experience	toll-free: 800 858 2060
	Home and Small Business	toll-free: 800 858 2222
	Preferred Accounts Division	toll-free: 800 858 2062
	Large Corporate Accounts GCP	toll-free: 800 858 2055
	Large Corporate Accounts Key Accounts	toll-free: 800 858 2628
	Large Corporate Accounts North	toll-free: 800 858 2999
	Large Corporate Accounts North Government and Education	toll-free: 800 858 2955
	Large Corporate Accounts East	toll-free: 800 858 2020
	Large Corporate Accounts East Government and Education	toll-free: 800 858 2669
	Large Corporate Accounts Queue Team	toll-free: 800 858 2572
	Large Corporate Accounts South	toll-free: 800 858 2355
	Large Corporate Accounts West	toll-free: 800 858 2811
	Large Corporate Accounts Spare Parts	toll-free: 800 858 2621
<b>Colombia</b>	General Support	980-9-15-3978
<b>Costa Rica</b>	General Support	0800-012-0435
<b>Czech Republic (Prague)</b>	Website: <a href="http://support.euro.dell.com">support.euro.dell.com</a>	
International Access Code: <b>00</b>	E-mail: <a href="mailto:czech_dell@dell.com">czech_dell@dell.com</a>	

Country Code: <b>420</b> City Code: <b>2</b>	Technical Support	02 22 83 27 27
	Customer Care	02 22 83 27 11
	Fax	02 22 83 27 14
	TechFax	02 22 83 27 28
	Switchboard	02 22 83 27 11
<b>Denmark (Copenhagen)</b>	Website: <b>support.euro.dell.com</b>	
International Access Code: <b>00</b>	E-mail Support (portable computers): den_nbk_support@dell.com	
	E-mail Support (desktop computers): den_support@dell.com	
Country Code: <b>45</b>	E-mail Support (servers): Nordic_server_support@dell.com	
	Technical Support	7023 0182
	Customer Care (Relational)	7023 0184
	Home/Small Business Customer Care	3287 5505
	Switchboard (Relational)	3287 1200
	Fax Switchboard (Relational)	3287 1201
	Switchboard (Home/Small Business)	3287 5000
	Fax Switchboard (Home/Small Business)	3287 5001
<b>Dominica</b>	General Support	toll-free: 1-866-278-6821
<b>Dominican Republic</b>	General Support	1-800-148-0530
<b>Ecuador</b>	General Support	toll-free: 999-119
<b>El Salvador</b>	General Support	01-899-753-0777
<b>Finland (Helsinki)</b>	Website: <b>support.euro.dell.com</b>	
International Access Code: <b>990</b>	E-mail: fin_support@dell.com	
	E-mail Support (servers): Nordic_support@dell.com	
Country Code: <b>358</b>	Technical Support	09 253 313 60
	Technical Support Fax	09 253 313 81
City Code: <b>9</b>	Relational Customer Care	09 253 313 38
	Home/Small Business Customer Care	09 693 791 94
	Fax	09 253 313 99
	Switchboard	09 253 313 00
<b>France (Paris) (Montpellier)</b>	Website: <b>support.euro.dell.com</b>	
International Access Code: <b>00</b>	E-mail: <b>support.euro.dell.com/fr/fr/emaildell/</b>	
	<b>Home and Small Business</b>	
Country Code: <b>33</b>	Technical Support	0825 387 270
	Customer Care	0825 823 833
City Codes: <b>(1) (4)</b>	Switchboard	0825 004 700
	Switchboard (calls from outside of France)	04 99 75 40 00
	Sales	0825 004 700
	Fax	0825 004 701
	Fax (calls from outside of France)	04 99 75 40 01
	<b>Corporate</b>	
	Technical Support	0825 004 719
	Customer Care	0825 338 339
	Switchboard	01 55 94 71 00
	Sales	01 55 94 71 00
Fax	01 55 94 71 01	
<b>Germany (Langen)</b>	Website: <b>support.euro.dell.com</b>	
International Access Code: <b>00</b>	E-mail: tech_support_central_europe@dell.com	
	Technical Support	06103 766-7200
Country Code: <b>49</b>	Home/Small Business Customer Care	0180-5-224400
	Global Segment Customer Care	06103 766-9570
City Code: <b>6103</b>	Preferred Accounts Customer Care	06103 766-9420
	Large Accounts Customer Care	06103 766-9560
	Public Accounts Customer Care	06103 766-9555
	Switchboard	06103 766-7000
<b>Grenada</b>	General Support	toll-free: 1-866-540-3355
<b>Guatemala</b>	General Support	1-800-999-0136
<b>Guyana</b>	General Support	toll-free: 1-877-270-4609
<b>Hong Kong</b>	Technical Support (Dimension™ and Inspiron™)	296 93188
	Technical Support (OptiPlex™, Latitude™, and Dell Precision™)	296 93191
International Access Code:		

001 Country Code: 852	Customer Service (non-technical, post-sales issues)	800 93 8291
	Transaction Sales	toll-free: 800 96 4109
	Large Corporate Accounts HK	toll-free: 800 96 4108
	Large Corporate Accounts GCP HK	toll-free: 800 90 3708
India	Technical Support	1600 33 8045
	Sales	1600 33 8044
Ireland (Cherrywood) International Access Code: 16 Country Code: 353 City Code: 1	Website: <a href="http://support.euro.dell.com">support.euro.dell.com</a>	
	E-mail: <a href="mailto:dell_direct_support@dell.com">dell_direct_support@dell.com</a>	
	Ireland Technical Support	1850 543 543
	U.K. Technical Support (dial within U.K. only)	0870 908 0800
	Home User Customer Care	01 204 4095
	Small Business Customer Care	01 204 4444
	U.K. Customer Care (dial within U.K. only)	0870 906 0010
	Corporate Customer Care	01 204 4003
	Ireland Sales	01 204 4444
	U.K. Sales (dial within U.K. only)	0870 907 4000
	SalesFax	01 204 0144
	Fax	01 204 5960
	Switchboard	01 204 4444
Italy (Milan) International Access Code: 00 Country Code: 39 City Code: 02	Website: <a href="http://support.euro.dell.com">support.euro.dell.com</a>	
	E-mail: <a href="mailto:support.euro.dell.com/it/it/emaildell/">support.euro.dell.com/it/it/emaildell/</a>	
	<b>Home and Small Business</b>	
	Technical Support	02 577 826 90
	Customer Care	02 696 821 14
	Fax	02 696 821 13
	Switchboard	02 696 821 12
	<b>Corporate</b>	
	Technical Support	02 577 826 90
	Customer Care	02 577 825 55
	Fax	02 575 035 30
	Switchboard	02 577 821
	Jamaica	General Support (dial from within Jamaica only)
Japan (Kawasaki) International Access Code: 001 Country Code: 81 City Code: 44	Website: <a href="http://support.jp.dell.com">support.jp.dell.com</a>	
	Technical Support (servers)	toll-free: 0120-198-498
	Technical Support outside of Japan (servers)	81-44-556-4162
	Technical Support (Dimension™ and Inspiron™)	toll-free: 0120-198-226
	Technical Support outside of Japan (Dimension and Inspiron)	81-44-520-1435
	Technical Support (Dell Precision™, OptiPlex™, and Latitude™)	toll-free: 0120-198-433
	Technical Support outside of Japan (Dell Precision, OptiPlex, and Latitude)	81-44-556-3894
	24-Hour Automated Order Service	044-556-3801
	Customer Care	044-556-4240
	Business Sales Division (up to 400 employees)	044-556-1465
	Preferred Accounts Division Sales (over 400 employees)	044-556-3433
	Large Corporate Accounts Sales (over 3500 employees)	044-556-3430
	Public Sales (government agencies, educational institutions, and medical institutions)	044-556-1469
	Global Segment Japan	044-556-3469
	Individual User	044-556-1760
Faxbox Service	044-556-3490	
Switchboard	044-556-4300	
Korea (Seoul) International Access Code: 001 Country Code: 82 City Code: 2	Technical Support	toll-free: 080-200-3800
	Sales	toll-free: 080-200-3600
	Customer Service (Seoul, Korea)	toll-free: 080-200-3800
	Customer Service (Penang, Malaysia)	604 633 4949
	Fax	2194-6202
	Switchboard	2194-6000
Latin America	Customer Technical Support (Austin, Texas, U.S.A.)	512 728-4093
	Customer Service (Austin, Texas, U.S.A.)	512 728-3619
	Fax (Technical Support and Customer Service) (Austin, Texas, U.S.A.)	512 728-3883

	Sales (Austin, Texas, U.S.A.)	512 728-4397
	SalesFax (Austin, Texas, U.S.A.)	512 728-4600 or 512 728-3772
<b>Luxembourg</b>	Website: <b>support.euro.dell.com</b>	
International Access Code: <b>00</b>	E-mail: tech_be@dell.com	
Country Code: <b>352</b>	Technical Support (Brussels, Belgium)	02 481 92 88
	Home/Small Business Sales (Brussels, Belgium)	toll-free: 080016884
	Corporate Sales (Brussels, Belgium)	02 481 91 00
	Customer Care (Brussels, Belgium)	02 481 91 19
	Fax (Brussels, Belgium)	02 481 92 99
	Switchboard (Brussels, Belgium)	02 481 91 00
<b>Macao</b>	Technical Support	toll-free: 0800 582
Country Code: <b>853</b>	Customer Service (Penang, Malaysia)	604 633 4949
	Transaction Sales	toll-free: 0800 581
<b>Malaysia (Penang)</b>	Technical Support	toll-free: 1 800 888 298
International Access Code: <b>00</b>	Customer Service	04 633 4949
Country Code: <b>60</b>	Transaction Sales	toll-free: 1 800 888 202
City Code: <b>4</b>	Corporate Sales	toll-free: 1 800 888 213
<b>Mexico</b>	Customer Technical Support	001-877-384-8979 or 001-877-269-3383
International Access Code: <b>00</b>	Sales	50-81-8800 or 01-800-888-3355
Country Code: <b>52</b>	Customer Service	001-877-384-8979 or 001-877-269-3383
	Main	50-81-8800 or 01-800-888-3355
<b>Montserrat</b>	General Support	toll-free: 1-866-278-6822
<b>Netherlands Antilles</b>	General Support	001-800-882-1519
<b>Netherlands (Amsterdam)</b>	Website: <b>support.euro.dell.com</b>	
International Access Code: <b>00</b>	E-mail (Technical Support):	
Country Code: <b>31</b>	(Enterprise): nl_server_support@dell.com	
City Code: <b>20</b>	(Latitude): nl_latitude_support@dell.com	
	(Inspiron): nl_inspiron_support@dell.com	
	(Dimension): nl_dimension_support@dell.com	
	(OptiPlex): nl_optiplex_support@dell.com	
	(Dell Precision): nl_workstation_support@dell.com	
	Technical Support	020 674 45 00
	Technical Support Fax	020 674 47 66
	Home/Small Business Customer Care	020 674 42 00
	Relational Customer Care	020 674 4325
	Home/Small Business Sales	020 674 55 00
	Relational Sales	020 674 50 00
	Home/Small Business Sales Fax	020 674 47 75
	Relational Sales Fax	020 674 47 50
	Switchboard	020 674 50 00
	Switchboard Fax	020 674 47 50
<b>New Zealand</b>	E-mail (New Zealand): nz_tech_support@dell.com	
International Access Code: <b>00</b>	E-mail (Australia): au_tech_support@dell.com	
Country Code: <b>64</b>	Home and Small Business	0800 446 255
	Government and Business	0800 444 617
	Sales	0800 441 567
	Fax	0800 441 566
<b>Nicaragua</b>	General Support	001-800-220-1006

<b>Norway (Lysaker)</b> International Access Code: <b>00</b> Country Code: <b>47</b>	Website: <b>support.euro.dell.com</b>	
	E-mail Support (portable computers): nor_nbk_support@dell.com	
	E-mail Support (desktop computers): nor_support@dell.com	
	E-mail Support (servers): nordic_server_support@dell.com	
	Technical Support	671 16882
	Relational Customer Care	671 17514
	Home/Small Business Customer Care	23162298
	Switchboard	671 16800
	Fax Switchboard	671 16865
<b>Panama</b>	General Support	001-800-507-0962
<b>Peru</b>	General Support	0800-50-669
<b>Poland (Warsaw)</b> International Access Code: <b>011</b> Country Code: <b>48</b> City Code: <b>22</b>	Website: <b>support.euro.dell.com</b>	
	E-mail: <b>pl_support@dell.com</b>	
	Customer Service Phone	57 95 700
	Customer Care	57 95 999
	Sales	57 95 999
	Customer Service Fax	57 95 806
	Reception Desk Fax	57 95 998
Switchboard	57 95 999	
<b>Portugal</b> International Access Code: <b>00</b> Country Code: <b>35</b>	E-mail: <b>support.euro.dell.com/es/es/emaildell/</b>	
	Technical Support	800 834 077
	Customer Care	800 300 415 or 800 834 075
	Sales	800 300 410 or 800 300 411 or 800 300 412 or 121 422 07 10
Fax	121 424 01 12	
<b>Puerto Rico</b>	General Support	1-800-805-7545
<b>St. Kitts and Nevis</b>	General Support	toll-free: 1-877-441-4731
<b>St. Lucia</b>	General Support	1-800-882-1521
<b>St. Vincent and the Grenadines</b>	General Support	toll-free: 1-877-270-4609
<b>Singapore (Singapore)</b> International Access Code: <b>005</b> Country Code: <b>65</b>	Technical Support	toll-free: 800 6011 051
	Customer Service (Penang, Malaysia)	604 633 4949
	Transaction Sales	toll-free: 800 6011 054
	Corporate Sales	toll-free: 800 6011 053
<b>South Africa (Johannesburg)</b> International Access Code: <b>09/091</b> Country Code: <b>27</b> City Code: <b>11</b>	Website: <b>support.euro.dell.com</b>	
	E-mail: <b>dell_za_support@dell.com</b>	
	Technical Support	011 709 7710
	Customer Care	011 709 7707
	Sales	011 709 7700
	Fax	011 706 0495
Switchboard	011 709 7700	
<b>Southeast Asian and Pacific Countries</b>	Customer Technical Support, Customer Service, and Sales (Penang, Malaysia)	604 633 4810
<b>Spain (Madrid)</b> International Access Code: <b>00</b> Country Code: <b>34</b> City Code: <b>91</b>	Website: <b>support.euro.dell.com</b>	
	E-mail: <b>support.euro.dell.com/es/es/emaildell/</b>	
	<b>Home and Small Business</b>	
	Technical Support	902 100 130
	Customer Care	902 118 540
	Sales	902 118 541
	Switchboard	902 118 541
	Fax	902 118 539
	<b>Corporate</b>	
	Technical Support	902 100 130
Customer Care	902 118 546	
Switchboard	91 722 92 00	

	Fax	91 722 95 83
<b>Sweden (Upplands Vasby)</b>	Website: <a href="http://support.euro.dell.com">support.euro.dell.com</a>	
International Access Code: <b>00</b>	E-mail: <a href="mailto:swe_support@dell.com">swe_support@dell.com</a>	
Country Code: <b>46</b>	E-mail Support for Latitude and Inspiron: <a href="mailto:Swe-nbk_kats@dell.com">Swe-nbk_kats@dell.com</a>	
City Code: <b>8</b>	E-mail Support for OptiPlex: <a href="mailto:Swe_kats@dell.com">Swe_kats@dell.com</a>	
	E-mail Support for Servers: <a href="mailto:Nordic_server_support@dell.com">Nordic_server_support@dell.com</a>	
	Technical Support	08 590 05 199
	Relational Customer Care	08 590 05 642
	Home/Small Business Customer Care	08 587 70 527
	Employee Purchase Program (EPP) Support	20 140 14 44
	Fax Technical Support	08 590 05 594
	Sales	08 590 05 185
<b>Switzerland (Geneva)</b>	Website: <a href="http://support.euro.dell.com">support.euro.dell.com</a>	
International Access Code: <b>00</b>	E-mail: <a href="mailto:swisstech@dell.com">swisstech@dell.com</a>	
Country Code: <b>41</b>	E-mail for French-speaking HSB and Corporate Customers: <a href="http://support.euro.dell.com/ch/fr/emaildell/">support.euro.dell.com/ch/fr/emaildell/</a>	
City Code: <b>22</b>	Technical Support (Home and Small Business)	0844 811 411
	Technical Support (Corporate)	0844 822 844
	Customer Care (Home and Small Business)	0848 802 202
	Customer Care (Corporate)	0848 821 721
	Fax	022 799 01 90
	Switchboard	022 799 01 01
<b>Taiwan</b>	Technical Support (portable and desktop computers)	toll-free: 00801 86 1011
International Access Code: <b>002</b>	Technical Support (servers)	toll-free: 0080 60 1256
Country Code: <b>886</b>	Transaction Sales	toll-free: 0080 651 228 or 0800 33 556
	Corporate Sales	toll-free: 0080 651 227 or 0800 33 555
<b>Thailand</b>	Technical Support	toll-free: 0880 060 07
International Access Code: <b>001</b>	Customer Service (Penang, Malaysia)	604 633 4949
Country Code: <b>66</b>	Sales	toll-free: 0880 060 09
<b>Trinidad/Tobago</b>	General Support	1-800-805-8035
<b>Turks and Caicos Islands</b>	General Support	toll-free: 1-866-540-3355
<b>U.K. (Bracknell)</b>	Website: <a href="http://support.euro.dell.com">support.euro.dell.com</a>	
International Access Code: <b>00</b>	Customer Care website: <a href="http://dell.co.uk/lca/customerservices">dell.co.uk/lca/customerservices</a>	
Country Code: <b>44</b>	E-mail: <a href="mailto:dell_direct_support@dell.com">dell_direct_support@dell.com</a>	
City Code: <b>1344</b>	Technical Support (Corporate/Preferred Accounts/PAD [1000+ employees])	0870 908 0500
	Technical Support (direct/PAD and general)	0870 908 0800
	Global Accounts Customer Care	01344 373 185 or 01344 373 186
	Home and Small Business Customer Care	0870 906 0010
	Corporate Customer Care	0870 908 0500
	Preferred Accounts (500-5000 employees) Customer Care	01344 373 196
	Central Government Customer Care	01344 373 193
	Local Government & Education Customer Care	01344 373 199
	Health Customer Care	01344 373 194
	Home and Small Business Sales	0870 907 4000
	Corporate/Public Sector Sales	01344 860 456
<b>Uruguay</b>	General Support	toll-free: 000-413-598-2521
<b>U.S.A. (Austin, Texas)</b>	Automated Order-Status Service	toll-free: 1-800-433-9014
International Access Code: <b>011</b>	AutoTech (portable and desktop computers)	toll-free: 1-800-247-9362
Country Code: <b>1</b>	<b>Consumer (Home and Home Office)</b>	
	Technical Support	toll-free: 1-800-624-9896
	Customer Service	toll-free: 1-800-624-9897
	<b>DellNet™ Service and Support</b>	toll-free: 1-877-Dellnet (1-877-335-5638)



	Employee Purchase Program (EPP) Customers	toll-free: 1-800-695-8133
	Financial Services website: <a href="http://www.dellfinancialservices.com">www.dellfinancialservices.com</a>	
	Financial Services (lease/loans)	toll-free: 1-877-577-3355
	Financial Services (Dell Preferred Accounts [DPA])	toll-free: 1-800-283-2210
	<b>Business</b>	
	Customer Service and Technical Support	toll-free: 1-800-822-8965
	Employee Purchase Program (EPP) Customers	toll-free: 1-800-695-8133
	Projectors Technical Support	toll-free: 1-877-459-7298
	<b>Public (government, education, and healthcare)</b>	
	Customer Service and Technical Support	toll-free: 1-800-456-3355
	Employee Purchase Program (EPP) Customers	toll-free: 1-800-234-1490
	Dell Sales	toll-free: 1-800-289-3355 or toll-free: 1-800-879-3355
	Dell Outlet Store (Dell refurbished computers)	toll-free: 1-888-798-7561
	Software and Peripherals Sales	toll-free: 1-800-671-3355
	Spare Parts Sales	toll-free: 1-800-357-3355
	Extended Service and Warranty Sales	toll-free: 1-800-247-4618
	Fax	toll-free: 1-800-727-8320
	Dell Services for the Deaf, Hard-of-Hearing, or Speech-Impaired	toll-free: 1-877-DELLTTY (1-877-335-5889)
<b>U.S. Virgin Islands</b>	General Support	1-877-673-3355
<b>Venezuela</b>	General Support	8001-3605

## Regulatory Notices

Electromagnetic Interference (EMI) is any signal or emission, radiated in free space or conducted along power or signal leads, that endangers the functioning of a radio navigation or other safety service or seriously degrades, obstructs, or repeatedly interrupts a licensed radio communications service. Radio communications services include but are not limited to AM/FM commercial broadcast, television, cellular services, radar, air-traffic control, pager, and Personal Communication Services (PCS). These licensed services, along with unintentional radiators such as digital devices, including computer systems, contribute to the electromagnetic environment.

Electromagnetic Compatibility (EMC) is the ability of items of electronic equipment to function properly together in the electronic environment. While this computer system has been designed and determined to be compliant with regulatory agency limits for EMI, there is no guarantee that interference will not occur in a particular installation. If this equipment does cause interference with radio communications services, which can be determined by turning the equipment off and on, you are encouraged to try to correct the interference by one or more of the following measures:

- 1 Reorient the receiving antenna.
- 1 Relocate the computer with respect to the receiver.
- 1 Move the computer away from the receiver.
- 1 Plug the computer into a different outlet so that the computer and the receiver are on different branch circuits.

If necessary, consult a Dell Technical Support representative or an experienced radio/television technician for additional suggestions.

Dell computer systems are designed, tested, and classified for their intended electromagnetic environment. These electromagnetic environment classifications generally refer to the following harmonized definitions:


- 1 Class A is typically for business or industrial environments.
- 1 Class B is typically for residential environments.

Information Technology Equipment (ITE), including peripherals, expansion cards, printers, input/output (I/O) devices, monitors, and so on, that are integrated into or connected to the system should match the electromagnetic environment classification of the computer system.

**A Notice About Shielded Signal Cables: Use only shielded cables for connecting peripherals to any Dell device to reduce the possibility of interference with radio communications services. Using shielded cables ensures that you maintain the appropriate EMC classification for the intended environment. For parallel printers, a cable is available from Dell. If you prefer, you can order a cable from Dell on the World Wide Web at [accessories.us.dell.com/sna/category.asp?category\\_id=4117](http://accessories.us.dell.com/sna/category.asp?category_id=4117).**

Most Dell computer systems are classified for Class B environments. However, the inclusion of certain options can change the rating of some configurations to Class A. To determine the electromagnetic classification for your system or device, refer to the following sections specific for each regulatory agency. Each section provides country-specific EMC/EMI or product safety information.

## FCC Notices (U.S. Only)

Most Dell computer systems are classified by the Federal Communications Commission (FCC) as Class B digital devices. To determine which classification applies to your computer system, examine all FCC registration labels located on the bottom or back panel of your computer, on card-mounting brackets, and on the cards themselves. If any one of the labels carries a Class A rating, your entire system is considered to be a Class A digital device. If *all* labels carry an FCC Class B rating as distinguished by either an FCC ID number or the FCC logo, () , your system is considered to be a Class B digital device.

Once you have determined your system's FCC classification, read the appropriate FCC notice. Note that FCC regulations provide that changes or modifications

not expressly approved by Dell could void your authority to operate this equipment.

This device complies with Part 15 of the FCC Rules. Operation is subject to the following two conditions:

- 1 This device may not cause harmful interference.
- 1 This device must accept any interference received, including interference that may cause undesired operation.

### Class A

This equipment has been tested and found to comply with the limits for a Class A digital device pursuant to Part 15 of the FCC Rules. These limits are designed to provide reasonable protection against harmful interference when the equipment is operated in a commercial environment. This equipment generates, uses, and can radiate radio frequency energy and, if not installed and used in accordance with the manufacturer's instruction manual, may cause interference with radio communications. Operation of this equipment in a residential area is likely to cause harmful interference, in which case you will be required to correct the interference at your own expense.

### Class B

This equipment has been tested and found to comply with the limits for a Class B digital device pursuant to Part 15 of the FCC Rules. These limits are designed to provide reasonable protection against harmful interference in a residential installation. This equipment generates, uses, and can radiate radio frequency energy and, if not installed and used in accordance with the manufacturer's instruction manual, may cause interference with radio communications. However, there is no guarantee that interference will not occur in a particular installation. If this equipment does cause harmful interference to radio or television reception, which can be determined by turning the equipment off and on, you are encouraged to try to correct the interference by one or more of the following measures:

- 1 Reorient or relocate the receiving antenna.
- 1 Increase the separation between the equipment and the receiver.
- 1 Connect the equipment into an outlet on a circuit different from that to which the receiver is connected.
- 1 Consult the dealer or an experienced radio/television technician for help.

The following information is provided on the device or devices covered in this document in compliance with FCC regulations:

- 1 Model number: PowerConnect 3024
- 1 Company name:

Dell Computer Corporation  
One Dell Way  
Round Rock, Texas 78682 USA  
(512) 338-4400

---

## IC Notice (Canada Only)

Most Dell computer systems (and other Dell digital apparatus) are classified by the Industry Canada (IC) Interference-Causing Equipment Standard #3 (ICES-003) as Class B digital devices. To determine which classification (Class A or B) applies to your computer system (or other Dell digital apparatus), examine all registration labels located on the bottom or the back panel of your computer (or other digital apparatus). A statement in the form of "IC Class A ICES-003" or "IC Class B ICES-003" will be located on one of these labels. Note that Industry Canada regulations provide that changes or modifications not expressly approved by Dell could void your authority to operate this equipment.

This Class B (or Class A, if so indicated on the registration label) digital apparatus meets the requirements of the Canadian Interference-Causing Equipment Regulations.

Cet appareil numérique de la Classe B (ou Classe A, si ainsi indiqué sur l'étiquette d'enregistrement) respecte toutes les exigences du Règlement sur le Matériel Brouilleur du Canada.

---

## CE Notice (European Union)

Marking by the symbol **CE** indicates compliance of this Dell computer to the EMC Directive and the Low Voltage Directive of the European Union. Such marking is indicative that this Dell system meets the following technical standards:

- 1 EN 55022 — "Information Technology Equipment — Radio Disturbance Characteristics — Limits and Methods of Measurement."
- 1 EN 55024 — "Information Technology Equipment - Immunity Characteristics - Limits and Methods of Measurement."
- 1 EN 61000-3-2 — "Electromagnetic Compatibility (EMC) - Part 3: Limits - Section 2: Limits for Harmonic Current Emissions (Equipment Input Current Up to and Including 16 A Per Phase)."
- 1 EN 61000-3-3 — "Electromagnetic Compatibility (EMC) - Part 3: Limits - Section 3: Limitation of Voltage Fluctuations and Flicker in Low-Voltage Supply Systems for Equipment With Rated Current Up to and Including 16 A."
- 1 EN 60950 — "Safety of Information Technology Equipment."

**NOTE:** EN 55022 emissions requirements provide for two classifications:

- 1 Class A is for typical commercial areas.

<sup>1</sup> Class B is for typical domestic areas.

This Dell device is classified for use in a typical Class B domestic environment.

A "Declaration of Conformity" in accordance with the preceding directives and standards has been made and is on file at Dell Computer Corporation Products Europe BV, Limerick, Ireland.

---

## ENERGY STAR® Compliance

Certain configurations of Dell™ computers comply with the requirements set forth by the Environmental Protection Agency (EPA) for energy-efficient computers. If your computer bears the ENERGY STAR® Emblem, your original configuration complies with these requirements and all ENERGY STAR® power management features of the computer are enabled.

**NOTE:** Any Dell computer bearing the ENERGY STAR® Emblem is certified to comply with EPA ENERGY STAR® requirements as configured when shipped by Dell. Any changes you make to this configuration (such as installing additional expansion cards or drives) may increase the computer's power consumption beyond the limits set by the EPA's ENERGY STAR® Computers program.



### ENERGY STAR® Emblem

The EPA's ENERGY STAR® Computers program is a joint effort between the EPA and computer manufacturers to reduce air pollution by promoting energy-efficient computer products. The EPA estimates that use of ENERGY STAR® computer products can save computer users up to two billion dollars annually in electricity costs. In turn, this reduction in electricity usage can reduce emissions of carbon dioxide, the gas primarily responsible for the greenhouse effect, and sulfur dioxide and nitrogen oxides, the primary causes of acid rain.

You can also help reduce electricity usage and its side effects by turning off your computer when it is not in use for extended periods of time, particularly at night and on weekends.

---

## Simplified Chinese Class A Warning Notice (China Only)

On Class A systems, the following warning will appear near the regulatory label:

**Warning: This is a Class A product. In a domestic environment this product may cause radio interference, in which case the user may be required to take adequate measures.**

### 声明

此为 A 级产品，在生活环境中，该产品可能会造成无线电干扰。  
在这种情况下，可能需要用户对其干扰采取切实可行的措施。

---

## EN 55022 Compliance (Czech Republic Only)

This device belongs to Class B devices as described in EN 55022, unless it is specifically stated that it is a Class A device on the specification label. The following applies to devices in Class A of EN 55022 (radius of protection up to 30 meters). The user of the device is obliged to take all steps necessary to remove sources of interference to telecommunication or other devices.

Pokud není na typovém štítku počítače uvedeno, že spadá do třídy A podle EN 55022, spadá automaticky do třídy B podle EN 55022. Pro zařízení zařazená do třídy A (ochranné pásmo 30m) podle EN 55022 platí následující. Dojde-li k rušení telekomunikačních nebo jiných zařízení, je uživatel povinen provést taková opatření, aby rušení odstranil.

---

## VCCI Notice (Japan Only)

Most Dell computer systems are classified by the Voluntary Control Council for Interference (VCCI) as Class B information technology equipment (ITE). However, the inclusion of certain options can change the rating of some configurations to Class A. ITE, including peripherals, expansion cards, printers, input/output (I/O) devices, monitors, and so on, integrated into or connected to the system should match the electromagnetic environment classification (Class A or B) of the computer system.

To determine which classification applies to your computer system, examine the regulatory labels/markings (see "VCCI Class A ITE Regulatory Mark" and "VCCI Class B ITE Regulatory Mark") located on the bottom, side, or back panel of your computer. Once you have determined your system's VCCI classification, read the appropriate VCCI notice.

## Class A ITE

この装置は、情報処理装置等電波障害自主規制協議会(VCCI)の基準に基づくクラス A 情報技術装置です。この装置を家庭環境で使用すると電波妨害を引き起こすことがあります。この場合には使用者が適切な対策を講ずるよう要求されることがあります。

This is a Class A product based on the standard of the Voluntary Control Council for Interference (VCCI) for information technology equipment. If this equipment is used in a domestic environment, radio disturbance may arise. When such trouble occurs, the user may be required to take corrective actions.

### VCCI Class A ITE Regulatory Mark

If the regulatory label includes the following marking, your computer is a Class A product:

VCCI

## Class B ITE

この装置は、情報処理装置等電波障害自主規制協議会(VCCI)の基準に基づくクラス B 情報技術装置です。この装置は家庭環境で使用することを目的としていますが、ラジオやテレビジョン受信機に近接して使用されると、受信障害を引き起こすことがあります。取扱説明書に従って正しい取り扱いをしてください。

This is a Class B product based on the standard of the Voluntary Control Council for Interference (VCCI) for information technology equipment. If this equipment is used near a radio or television receiver in a domestic environment, it may cause radio interference. Install and use the equipment according to the instruction manual.

### VCCI Class B ITE Regulatory Mark

If the regulatory label includes the following marking, your computer is a Class B product:



---

## MIC Notice (Republic of Korea Only)

To determine which classification (Class A or B) applies to your computer (or other Dell digital device), examine the Republic of Korean Ministry of Information and Communications (MIC) registration labels located on your computer (or other Dell digital device). The MIC label may be located separately from the other regulatory marking applied to your product. Line two of the label identifies the emissions class for the product—"A" for Class A products or "B" for Class B products.

**NOTE:** MIC emissions requirements provide for two classifications:

- 1 Class A devices are for business purposes.
- 1 Class B devices are for nonbusiness purposes.

### Class A Device

기종별	사용자안내문
A급 기기 (업무용 정보통신기기)	이 기기는 업무용으로 전자파적합등록을 한 기기이오니 판매자 또는 사용자는 이 점을 주의하시기 바라며 만약 잘못 판매 또는 구입하였을 때에는 가정용으로 교환하시기 바랍니다.

Please note that this device has been approved for business purposes with regard to electromagnetic interference. If you find that this device is not suitable for your use, you may exchange it for a nonbusiness-purpose device.

### MIC Class A Regulatory Label

If the regulatory label includes the following marking, your computer is a Class A product:



1. 기기의 명칭(모델명):
2. 인증번호:(A)
3. 인증받은 자의 상호:
4. 제조년월일:
5. 제조자/제조국가:

## Class B Device

기종별	사용자 안내문
B급 기기 (가정용 정보통신기기)	이 기기는 가정용으로 전자파적합등록을 한 기기로서 주거지역에서는 물론 모든 지역에서 사용할 수 있습니다.

Please note that this device has been approved for nonbusiness purposes and may be used in any environment, including residential areas.

### MIC Class B Regulatory Label

If the regulatory label includes the following marking, your computer is a Class B product.



1. 기기의 명칭(모델명):
2. 인증번호:(B)
3. 인증받은 자의 상호:
4. 제조년월일:
5. 제조자/제조국가:

## Polish Center for Testing and Certification Notice

The equipment should draw power from a socket with an attached protection circuit (a 3-prong socket). All equipment that works together (computer, monitor, printer, and so on) should have the same power supply source.

The phasing conductor of the room's electrical installation should have a reserve short-circuit protection device in the form of a fuse with a nominal value no larger than 16 amperes (A).

To completely switch off the equipment, the power supply cable must be removed from the power supply socket, which should be located near the equipment and easily accessible.

A protection mark "B" confirms that the equipment is in compliance with the protection usage requirements of standards PN-93/T-42107 and PN-EN 55022:1996.

### Wymagania Polskiego Centrum Badań i Certyfikacji

Urządzenie powinno być zasilane z gniazda z przyłączonym obwodem ochronnym (gniazdo z kolkiem). Współpracujące ze sobą urządzenia (komputer, monitor, drukarka) powinny być zasilane z tego samego źródła.

Instalacja elektryczna pomieszczenia powinna zawierać w przewodzie fazowym rezerwową ochronę przed zwarciami, w postaci bezpiecznika o wartości znamionowej nie większej niż 16A (amperów).

W celu całkowitego wyłączenia urządzenia z sieci zasilania, należy wyjąć wtyczkę kabla zasilającego z gniazdka, które powinno znajdować się w pobliżu urządzenia i być łatwo dostępne. Znak bezpieczeństwa "B" potwierdza zgodność urządzenia z wymaganiami bezpieczeństwa użytkownika zawartymi w PN-93/T-42107 i PN-EN 55022:1996.

Jeżeli na tabliczce znamionowej umieszczono informację, że urządzenie jest klasy A, to oznacza to, że urządzenie w środowisku mieszkalnym może powodować zakłócenia radioelektryczne. W takich przypadkach można żądać od jego użytkownika zastosowania odpowiednich środków zaradczych.

### Pozostałe instrukcje bezpieczeństwa

- Nie należy używać wtyczek adapterowych lub usuwać kołka obwodu ochronnego z wtyczki. Jeżeli konieczne jest użycie przedłużacza to należy użyć przedłużacza 3-żyłowego z prawidłowo połączonym przewodem ochronnym.
- System komputerowy należy zabezpieczyć przed nagłymi, chwilowymi wzrostami lub spadkami napięcia, używając eliminatora przepięć, urządzenia dopasowującego lub bezzakłóceńowego źródła zasilania.
- Należy upewnić się, aby nic nie leżało na kablach systemu komputerowego, oraz aby kable nie były umieszczone w miejscu, gdzie można byłoby na nie nadeptywać lub potykać się o nie.
- Nie należy rozlewać napojów ani innych płynów na system komputerowy.
- Nie należy wpychać żadnych przedmiotów do otworów systemu komputerowego, gdyż może to spowodować pożar lub porażenie prądem, poprzez zwarcie elementów wewnętrznych.
- System komputerowy powinien znajdować się z dala od grzejników i źródeł ciepła. Ponadto, nie należy blokować otworów wentylacyjnych. Należy unikać kładzenia luźnych papierów pod komputer oraz umieszczania komputera w ciasnym miejscu bez możliwości cyrkulacji powietrza wokół niego.

## BSMI Notice (Taiwan Only)

If you find a  or  mark on the regulatory

label on the bottom, side, or back panel of your computer, the following section is applicable:

### BSMI 通告（僅限於台灣）

大多數的 Dell 電腦系統被 BSMI (經濟部標準檢驗局) 劃分為乙類數位裝置。但是，使用某些選件會使有些組態的等級變成甲類。若要確定您的電腦系統適用等級，請檢查所有位於電腦底部或背面板、擴充卡安裝托架，以及擴充卡上的 BSMI 註冊標識。如果其中有一甲類標識，即表示您的系統為甲類數位裝置。如果只有 BSMI 的檢驗號碼標識，則表示您的系統為乙類數位裝置。

一旦確定了系統的 BSMI 等級，請閱讀相關的 BSMI 通告。請注意，BSMI 通告規定凡是未經 Dell Computer Corporation 明確批准的擅自變更或修改，將導致您失去此設備的使用權。

此裝置符合 BSMI (經濟部標準檢驗局) 的規定，使用時須符合以下兩項條件：

- 此裝置不會產生有害干擾。
- 此裝置必須能接受所接收到的干擾，包括可能導致無法正常作業的干擾。

### 甲類

此設備經測試證明符合 BSMI (經濟部標準檢驗局) 之甲類數位裝置的限制規定。這些限制的目的是為了在商業環境中使用此設備時，能提供合理的保護以防止有害的干擾。此設備會產生、使用並散發射頻能量；如果未遵照製造廠商的指導手冊來安裝和使用，可能會干擾無線電通訊。請勿在住宅區使用此設備。

#### 警告使用者：

這是甲類的資訊產品，在居住的環境中使用時，可能會造成射頻干擾，在這種情況下，使用者會被要求採取某些適當的對策。

## 乙類

此設備經測試證明符合 BSMI (經濟部標準檢驗局) 之乙類數位裝置的限制規定。這些限制的目的是為了在住宅安裝時，能防止有害的干擾，提供合理的保護。此設備會產生、使用並散發射頻能量；如果未遵照製造廠商的指導手冊來安裝和使用，可能會干擾無線電通訊。但是，這並不保證在個別的安装中不會產生干擾。您可以透過關閉和弱啓此設備來判斷它是否會對廣播和電視收訊造成干擾；如果確實如此，我們建議您嘗試以下列一種或多種方法來排除干擾：

- 重新調整天線的接收方向或重新放置接收天線。
- 增加設備與接收器的距離。
- 將設備連接至不同的插座，使設備與接收器連接在不同的電路上。
- 請向經銷商或有經驗的無線電/電視技術人員查詢，以獲得幫助。

## NOM Information (Mexico Only)


The following information is provided on the device(s) described in this document in compliance with the requirements of the official Mexican standards (NOM):

Exporter:	Dell Computer Corporation One Dell Way Round Rock, TX 78682
Importer:	Dell Computer de México, S.A. de C.V. Paseo de la Reforma 2620 - 11º Piso Col. Lomas Altas 11950 México, D.F.
Ship to:	Dell Computer de México, S.A. de C.V. al Cuidado de Kuehne & Nagel de México S. de R.I. Avenida Soles No. 55 Col. Peñon de los Baños 15520 México, D.F.
Model number:	PowerConnect 3024
Supply voltage:	100-240 VAC
Frequency:	50-60 Hz
Input current rating:	1.5 A

[Back to Contents Page](#)

## Caution: Safety Instructions

Dell™ PowerConnect™ 3024 Systems User's Guide

<p>Use the following safety guidelines to ensure your own personal safety and to help protect your system from potential damage.</p>
<h3>General</h3>
<ol style="list-style-type: none"><li>1 Observe and follow service markings. Do not service any product except as explained in your system documentation. Opening or removing covers that are marked with the triangular symbol with a lightning bolt may expose you to electrical shock. Components inside these compartments should be serviced only by a trained service technician.</li></ol>
<ol style="list-style-type: none"><li>1 If any of the following conditions occur, unplug the product from the electrical outlet and replace the part or contact your trained service provider:<ul style="list-style-type: none"><li>o The power cable, extension cable, or plug is damaged.</li><li>o An object has fallen into the product.</li><li>o The product has been exposed to water.</li><li>o The product has been dropped or damaged.</li><li>o The product does not operate correctly when you follow the operating instructions.</li></ul></li></ol>
<ol style="list-style-type: none"><li>1 Keep your system away from radiators and heat sources. Also, do not block cooling vents.</li></ol>
<ol style="list-style-type: none"><li>1 Do not spill food or liquids on your system components, and never operate the product in a wet environment. If the system gets wet, see the appropriate section in your troubleshooting guide or contact your trained service provider.</li></ol>
<ol style="list-style-type: none"><li>1 Do not push any objects into the openings of your system. Doing so can cause fire or electric shock by shorting out interior components.</li></ol>
<ol style="list-style-type: none"><li>1 Use the product only with approved equipment.</li></ol>
<ol style="list-style-type: none"><li>1 Allow the product to cool before removing covers or touching internal components.</li></ol>
<ol style="list-style-type: none"><li>1 Operate the product only from the type of external power source indicated on the electrical ratings label. If you are not sure of the type of power source required, consult your service provider or local power company.</li></ol>
<p> <b>NOTICE:</b> To help avoid damaging your system, be sure the voltage selection switch (if provided) on the power supply is set for the voltage that most closely matches the AC power available in your location. Also be sure that your monitor and attached devices are electrically rated to operate with the power available in your location.</p> <ol style="list-style-type: none"><li>1 Use only approved power cable(s). If you have not been provided with a power cable for your system or for any AC-powered option intended for your system, purchase a power cable that is approved for use in your country. The power cable must be rated for the product and for the voltage and current marked on the product's electrical ratings label. The voltage and current rating of the cable should be greater than the ratings marked on the product.</li></ol>
<ol style="list-style-type: none"><li>1 To help prevent electric shock, plug the system and peripheral power cables into properly grounded electrical outlets. These cables are equipped with three-prong plugs to help ensure proper grounding. Do not use adapter plugs or remove the grounding prong from a cable. If you must use an extension cable, use a 3-wire cable with properly grounded plugs.</li></ol>
<ol style="list-style-type: none"><li>1 Observe extension cable and power strip ratings. Make sure that the total ampere rating of all products plugged into the extension cable or power strip does not exceed 80 percent of the ampere ratings limit for the extension cable or power strip.</li></ol>
<ol style="list-style-type: none"><li>1 To help protect your system from sudden, transient increases and decreases in electrical power, use a surge suppressor, line conditioner, or un-interruptible power supply (UPS).</li></ol>
<ol style="list-style-type: none"><li>1 Position system cables and power cables carefully; route cables so that they cannot be stepped on or tripped over. Be sure that nothing rests on any cables.</li></ol>
<ol style="list-style-type: none"><li>1 Do not modify power cables or plugs. Consult a licensed electrician or your power company for site modifications. Always follow your local/national wiring rules.</li></ol>
<ol style="list-style-type: none"><li>1 When connecting or disconnecting power to hot-pluggable power supplies, if offered with your</li></ol>



system, observe the following guidelines:

- o Install the power supply before connecting the power cable to the power supply.
- o Unplug the power cable before removing the power supply.
- o If the system has multiple sources of power, disconnect power from the system by unplugging *all* power cables from the power supplies.

- 1 Move products with care; ensure that all casters and/or stabilizers are firmly connected to the system. Avoid sudden stops and uneven surfaces.

## Rack Mounting of Systems

Observe the following precautions for rack stability and safety. Also refer to the rack installation documentation accompanying the system and the rack for specific caution statements and procedures.

Systems are considered to be components in a rack. Thus, "component" refers to any system as well as to various peripherals or supporting hardware.

**⚠ CAUTION:** Installing systems in a rack without the front and side stabilizers installed could cause the rack to tip over, potentially resulting in bodily injury under certain circumstances. Therefore, always install the stabilizers before installing components in the rack.

After installing system/components in a rack, never pull more than one component out of the rack on its slide assemblies at one time. The weight of more than one extended component could cause the rack to tip over and may result in serious injury.

**NOTE:** Your system is safety-certified as a free-standing unit and as a component for use in a Dell rack cabinet using the customer rack kit. The installation of your system and rack kit in any other rack cabinet has not been approved by any safety agencies. It is your responsibility to have the final combination of system and rack kit in a rack cabinet evaluated for suitability by a certified safety agency. Dell disclaims all liability and warranties in connection with such combinations.

- 1 System rack kits are intended to be installed in a rack by trained service technicians. If you install the kit in any other rack, be sure that the rack meets the specifications of a Dell rack.

**⚠ CAUTION:** Do not move racks by yourself. Due to the height and weight of the rack, a minimum of two people should accomplish this task.

- 1 Before working on the rack, make sure that the stabilizers are secured to the rack, extended to the floor, and that the full weight of the rack rests on the floor. Install front and side stabilizers on a single rack or front stabilizers for joined multiple racks before working on the rack.

- 1 Always load the rack from the bottom up, and load the heaviest item in the rack first.

- 1 Make sure that the rack is level and stable before extending a component from the rack.

- 1 Use caution when pressing the component rail release latches and sliding a component into or out of a rack; the slide rails can pinch your fingers.

- 1 After a component is inserted into the rack, carefully extend the rail into a locking position, and then slide the component into the rack.

- 1 Do not overload the AC supply branch circuit that provides power to the rack. The total rack load should not exceed 80 percent of the branch circuit rating.

- 1 Ensure that proper airflow is provided to components in the rack.

- 1 Do not step on or stand on any component when servicing other components in a rack.

**⚠ CAUTION:** A qualified electrician must perform all connections to DC power and to safety grounds. All electrical wiring must comply with applicable local or national codes and practices.

**⚠ CAUTION:** Never defeat the ground conductor or operate the equipment in the absence of a suitably installed ground conductor. Contact the appropriate electrical inspection authority or an electrician if you are uncertain that suitable grounding is available.

**⚠ CAUTION:** The system chassis must be positively grounded to the rack cabinet frame. Do not attempt to connect power to the system until grounding cables are connected. Completed power and safety ground wiring must be inspected by a qualified electrical inspector. An energy hazard will exist if the safety ground cable is omitted or disconnected.

## Modems, Telecommunications, or Local Area Network Options

- 1 Do not connect or use a modem during a lightning storm. There may be a risk of electrical shock from lightning.

- |   |  |
|---|--|
| 1 | Never connect or use a modem in a wet environment.   |
| 1 | Do not plug a modem or telephone cable into the network interface controller (NIC) receptacle.   |
| 1 | Disconnect the modem cable before opening a product enclosure, touching or installing internal components, or touching an uninsulated modem cable or jack. |

## When Working Inside Your System

### Protecting Against Electrostatic Discharge

Static electricity can harm delicate components inside your system. To prevent static damage, discharge static electricity from your body before you touch any of the electronic components, such as the microprocessor. You can do so by periodically touching an unpainted metal surface on the chassis.

You can also take the following steps to prevent damage from electrostatic discharge (ESD):

- |   |  |
|---|--|
| 1 | When unpacking a static-sensitive component from its shipping carton, do not remove the component from the antistatic packing material until you are ready to install the component in your system. Just before unwrapping the antistatic packaging, be sure to discharge static electricity from your body. |
| 1 | When transporting a sensitive component, first place it in an antistatic container or packaging.   |
| 1 | Handle all sensitive components in a static-safe area. If possible, use antistatic floor pads and workbench pads and an antistatic grounding strap.  |

**NOTE:** Your system may also include circuit cards or other components that contain batteries. These batteries must also be disposed of in a battery deposit site. For information about such batteries, refer to the documentation for the specific card or component.